



**THEATRE & DANCE**

[theatre.indiana.edu](http://theatre.indiana.edu)



**DIRECTED BY JENNY MCKNIGHT**

**WELLS-METZ THEATRE**

IU Theatre + Dance acknowledges and honors the Indigenous communities native to this region and recognizes that Indiana University Bloomington is built on Indigenous homelands and resources. We recognize the myaamiki, Lënape, Bodwéwadmik and saawanwa people as past, present and future caretakers of this land.

## LIVE PERFORMANCE

The mission of the Department of Theatre, Drama and Contemporary Dance is to advance the art, scholarship and appreciation of theatre and dance and its place in society. We pursue this mission collectively and as individuals through theatrical productions, scholarship and publication, presentation of our work in national and international venues, formal instruction and individual mentoring.

The Department of Theatre, Drama and Contemporary Dance is accredited by the National Association of Schools of Theatre and is a member of the University/Resident Theatre Association and United States Institute for Theatre Technology.

## LIVING IMPACT



# Message from the producer



Greetings and welcome to the IU Theatre and Dance 2024-2025 production season!

It is an honor and with great enthusiasm that

we share our IU Theatre & Dance season with you!

Live theatre and dance create a community that shares our most important stories. Continuing in our tradition of bringing exciting, meaningful, and entertaining work to our audiences, this season will encourage critical dialogue and engage viewers to consider these stories as opportunities of empathy and reflection.

Live performance is an opportunity to express the zeitgeist of our world. We hope that you will join us for many additional post-show discussions and opening night post-performance cookies in the lobby. These provide a space for dialogue with others about the work our students and faculty produce.

This year we welcome a new generation of graduate and undergraduate students that will directly contribute to the artistry and craft. We'd like to take a moment to welcome many international and nationally recognized guest artists to our season — from choreography to directing to designing. We'd also like to welcome Professor Raymond Sage, who joins our faculty as Head of Musical Theatre Voice and Musical Theatre Voice Pedagogy and Visiting Assistant Professor Grant Goodman in Acting and Directing. We also welcome

Carolynn Stouder as our Program and Project Director and Michelle Moore as Props and Scenic Arts Specialist.

We take a moment to bid a fond farewell to Professor Nancy Lipschultz and Dr. Eleanor Owicki on their retirement, two fantastic faculty members in our community who are moving on to wonderful new chapters. We thank them for their expertise and service to our department and especially to our students.

Thank you to our patrons, donors, Theatre Circle members, and of course YOU, the audience experiencing our students' work at this performance! Please visit our website or pick up a brochure to learn more about how you can become a member of the Theatre Circle, and to find out more about our upcoming productions, student independent projects, guest artists, student organizations, and class offerings. We look forward to having you join us for all our live performances this year and wish you our very best for the 2024-2025 academic year!

Linda Pisano  
Chair and Producer



INDIANA UNIVERSITY BLOOMINGTON  
SITS ON THE ANCESTRAL  
HOMELANDS OF THE  
MYAAMIAKI, LÉNAPE,  
BODWÉWADMIK & SAAWANWA PEOPLE



© 2024 INDIANA UNIVERSITY BLOOMINGTON



PRESENTS

# FUCKING A

By Suzan-Lori Parks

---

<b>DIRECTOR</b>	Jenny McKnight <sup>†</sup>
<b>STAGE MANAGER</b>	Kendrick Weingast
<b>ASST. STAGE MANAGER</b>	Alexis Ream
<b>MUSIC DIRECTOR</b>	Lila Goldstein
<b>FIGHT COORDINATOR</b>	Leraldo Anzaldua
<b>VOCAL &amp; TEXT COACH</b>	Grant Goodman
<b>SCENIC DESIGNER</b>	Ash Cossey
<b>PAINT CHARGE</b>	Nick Boisvert
<b>PROPS MANAGER/ ASST. SCENIC DESIGNER</b>	Oliver Stark
<b>TECHNICAL DIRECTOR</b>	K'Nyia Bumpers
<b>LIGHTING DESIGNER</b>	Ashley Christensen
<b>HEAD ELECTRICIAN/ PROGRAMMER</b>	Nic Gwin
<b>COSTUME DESIGNER</b>	Jerrilyn Duckworth
<b>ASST. COSTUME DESIGNER</b>	Kate Lopez
<b>CUTTER/DRAPER</b>	Heather Milam
<b>SOUND DESIGNER</b>	Kris Nickeson
<b>ASST. SOUND DESIGNER</b>	Matt Kohl
<b>DRAMATURG</b>	Megan Gray Lederman
<b>FIGHT &amp; INTIMACY CAPTAIN</b>	Ryan Andrews



<sup>†</sup>The director is a member of the Stage Directors and Choreographers Society, a national theatrical labor union.

"Fucking A" is presented by arrangement with Concord Theatricals on behalf of Samuel French, Inc.  
[www.concordtheatricals.com](http://www.concordtheatricals.com)

The video and/or audio recording of this production is strictly prohibited. Do not use cell phones, pagers, or other devices that may emit sound or light.

WELLS-METZ THEATRE | NOVEMBER 14-22, 2024

# Cast

<b>HESTER SMITH</b>	Frankie Jo Bolda
<b>CANARY MARY/ENSEMBLE</b>	Isabelle McNamara-Angel
<b>MAYOR/ENSEMBLE</b>	Ryan Andrews*
<b>FIRST LADY/ENSEMBLE</b>	Olivia Johnson
<b>BUTCHER/ENSEMBLE</b>	Nomsa Andedo
<b>FREEDOM FUND LADY/ WAITING WOMAN 1/ ENSEMBLE</b>	Asal Hojabrpour
<b>MONSTER/ENSEMBLE</b>	Brian Alexander Davis
<b>JAILBAIT/HUNTER 3/ ENSEMBLE/ UNDERSTUDY MONSTER</b>	Chandler Deppert
<b>SCRIBE/GUARD/ ENSEMBLE/ UNDERSTUDY MAYOR</b>	Nate Cole
<b>HUNTER 1/ENSEMBLE/ UNDERSTUDY BUTCHER</b>	Kaleb Perkins
<b>HUNTER 2/ WAITING WOMAN 2/ ENSEMBLE/ UNDERSTUDY HESTER</b>	Emma Shapiro
<b>ENSEMBLE/ UNDERSTUDY CANARY MARY/ UNDERSTUDY FIRST LADY</b>	Lila Goldstein
<b>SWING</b>	Natalie Nuñez

\*Appears by permission of Actors' Equity Association, the union of professional Actors and Stage Managers in the United States.

## **PLACE/TIME:**

A small town,  
In a small country,  
In the middle of nowhere.  
Not now,  
Not here,  
Not Europe.

# Program Note

Suzan-Lori Parks is one of America's most acclaimed playwrights. A trailblazer in contemporary theater, she was the first Black woman to receive the Pulitzer Prize for Drama in 2002. Her plays are as much about historical reflection as they are about challenging the present day, filled with musical language and societal exploration. Her unique perspective, shaped by her roots in Kentucky and Texas and formative years in Germany, infuses her work with a blend of Southern cadence and European thought.

Our production draws inspiration from another revolutionary in theatre, German theatrical reformer Bertolt Brecht. Known for Epic Theatre, Brecht aimed to unsettle audiences, constantly reminding them that they are watching theatre and moving them from passive enjoyment to active thought. Like Parks, Brecht believed theatre should provoke and question. His approach distances audiences emotionally, prompting reflection rather than immersion.

In *FUCKING A*, Parks creates a world where individuals are stripped of identity, known only by their roles. This society prioritizes labor over life, production over people, and efficiency over empathy—devaluing people, reducing them to utility, and erasing their humanity.

As you experience tonight's play, notice how the theater itself creates a shared experience of observation—each of us watching and being watched, looking down or being looked down upon. This interplay of perspectives, intimate and distant, reflects the kind of theater you're about to witness.

I invite you to explore the dramaturgical materials in the lobby and scan the QR code to learn more.

Thank you for joining us.

Megan Gray Lederman  
Production Dramaturg



## **CONTENT DISCLOSURE:**

This production of *FUCKING A* by Suzan-Lori Parks uses stylized and non-realistic representations to explore topics including abortion, loss of life and freedom, issues of fertility and infertility, punishment and violence (including sexual assault and vigilantism). The production also employs pulsing lighting, simulated cigarette smoking, and language that some may find offensive. Weapons, including knives that have been modified for safe use and a deactivated firearm that cannot fire will be handled on stage.



# Cast



**NOMSA ANDEDO**  
(Butcher, Ensemble)

(he/him) is a fourth-year undergraduate student majoring in Theatre and Drama Acting B.A. A few of his interests are sports, fashion and film. For IU Theatre, he has performed in *Pipeline* (U/S Dun & U/S Xavier), *Orlando* (Captain). Nomsa is excited to be sharing this experience of *F\*\*king A* with you all!



**RYAN ANDREWS**  
(Mayor, Ensemble, Fight & Intimacy Captain)

Ryan is a 2nd year M.F.A. acting candidate. According to the ACLU, America, the land of the free, has earned the disturbing distinction of being the world's leading jailer. Representing just 5 percent of the world's population, we now hold 25 percent of its inmates. While Hester's world is fictitious, the issues represented realistically cloud our world. Please visit [www.aclu-in.org](http://www.aclu-in.org) for more information.



**FRANKIE JO BOLDA**  
(Hester Smith)

(she/her) is an Indianapolis-based actor, improviser, and musician pursuing her M.F.A. in Acting at IU. Regional Theatre Credits: *F\*\*king A*, *Pipeline* (IU Theatre), *25th Annual Putnam County Spelling Bee*, *Little Choo Choo* (IRT), *Hamlet* (IndyShakes), *PUFFS* (LAFF, Indiana Premiere), *Complete History of Comedy: Abridged* (Constellation/Cardinal Stage), *Pride & Prejudice* (Civic), and others. Frankie is a performer and instructor with CSz Worldwide/ComedySportz, a company member with Indianapolis Shakespeare Company, and an alumna of AMDA NYC.



**NATE COLE**  
(Scribe, Guard, Ensemble, U/S Mayor)

(he/him) Nate is a Theatre & Drama student and is incredibly excited to graduate at the end of this semester. His other credits with IU include: *Measure for Measure* (Pompey) and *Macbeth* (Captain/First Sister/Siward). Nate has also been a part of his local theatre community for several years now. He has made appearances on stage with the Evansville Shakespeare Players in *A Midsummer Night's Dream* (Lysander), StageTwo Productions in *Rocky Horror* (Narrator), and The Evansville Civic Theater in *Fahrenheit 451* (Montag).



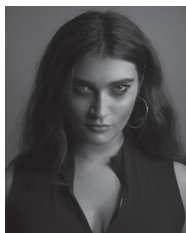
**BRIAN ALEXANDER DAVIS**  
(Monster, Ensemble)

Brian Alexander Davis is a second-year M.F.A. acting candidate hailing from Miami, FL. While earning his B.S. in Recreational Therapy from Florida International University, Brian worked with children of all ages in the behavioral analysis field, where he discovered his passion for storytelling and the performing arts. Recent credits include: *Pipeline* (Omari). Brian is excited to blend his unique work experiences with his commitment to the stage and looks forward to continued collaboration with his fellow artists.



**CHANDLER DEPERT**  
(Jailbait, Hunter 3, Ensemble, U/S Monster)

Chandler Deppert is a Junior Theatre B.A. in acting. He is extremely excited to be in his first show with vulgar language in the title, and his first mainstage play! He wants to thank Jenny McKnight for bringing her smile and expert directing to our production! You may have seen him at IU in past productions such as: *Vox Pop!* (Troubadour 7), *Be More Chill* (Rich), *Something Rotten* (Ensemble), *She Kills Monsters* (Chuck). Chandler's past Professional credits include: *You're a Good Man Charlie Brown* (Linus), and *Annie* (Rooster).



**LILA GOLDSTEIN**  
(Ensemble, Music Director,  
*U/S First Lady, Canary  
Mary*)

(she/her) is a Junior from Long Island, New York studying Vocal Performance, Musical Theatre and Composition

at the Jacobs School of Music. For IU Opera/Theatre: *Pop-Up Opera* (Mallika/Chorus), *Urinetown* (Little Becky Two-Shoes), *Falsettos* (Charlotte), *Be More Chill* (Chloe). Other: *Assassins* (Squeaky Fromme), *Gypsy* (Mama Rose), *Mamma Mia* (Donna), *Spring Awakening* (Martha), *Heathers* (Young Republicanette/Swing). Lila is the current Music Director of Hooshir A Cappella, IU's premier Jewish A Cappella group.



**ASAL HOJABRPOUR**  
(*Freedom Fund Lady, Waiting  
Woman I*)

Asal Hojabrpour is a second-year M.F.A. acting candidate at Indiana University, originally from Iran. She holds a B.A. in Dramatic Literature

from Soore University. Asal is thrilled to be the only international student in her acting cohort. In addition to her acting studies, she has experience teaching acting and performing arts to children and teenagers. Some of her credits include *Dial M for Murder* (Margot Wendice/Maxine Hadley cover) and *Measure for Measure* (Mariana). She is grateful for the opportunity to share the story of the play with such a supportive cast and crew.



**OLIVIA JOHNSON**  
(*First Lady*)

Olivia is a second-year M.F.A. acting candidate and playwright from Pensacola, Florida. She earned her B.A. in Theatre at Dillard University, home to the oldest HBCU theatre

program in the country, where she wrote and directed her original play, *ROUGAROU*. Her acting credits include: *Pipeline* (Nya), *Yellowman* (Alma), *The Skin of Our Teeth* (Mrs. Antrobus), and *Joe Turner's Come and Gone* (Martha Pentecost). Olivia is excited to be a part of this production and looks forward to sharing this journey with the audience.



**ISABELLE MCNAMARA  
ANGEL**  
(*Canary Mary*)

(she/her) is a second-year IU M.F.A. acting candidate from Queens, New York. This past Summer she had a wonderful time playing Maxine Hadley in IU's

*Dial M for Murder*. She recently graduated with a B.A. in both Theatre and History from the College of the Holy Cross in Worcester, Massachusetts. For IU Theatre: *Measure for Measure* (Escalus/Francisca). For IU's *Dial M* (Maxine Hadley). Other recent credits include: *The Tempest* (Miranda), *Company* (Joanne), *She Loves Me* (Ilona Ritter).



**NATALIE YESENIA NUÑEZ**  
(*Swing*)

(she/her/ella) Natalie is a Junior at Indiana University majoring in Law and Public Policy with minors in Theatre and Spanish. Natalie made her debut on IU Mainstage as Jasmine in

*Pipeline* last year, and she now takes on the role of swing in *F\*\*king A*. Beyond the stage, she hosts the WIUX radio show *Knockout Blends*. Looking to the future, Natalie envisions combining her passions for law and theatre with plans to attend law school after graduation.



**KALEB PERKINS**  
(*Hunter I*)

(he/him) is a Senior from Indianapolis, Indiana studying Arts Management and minoring in Theater. This is his third production with Indiana University, and he's is excited to work with

a great cast and crew. Previous credits include *Everybody* (Somebody) and *Pipeline* (Omari understudy). Post-graduation, Kaleb plans to pursue a career in acting and entertainment.





**EMMA SHAPIRO**  
*(Hunter 2, Waiting Woman 2, U/S Hester)*

(she/her) is a Senior working towards a B.A. in Theatre & Drama. *Fucking A* is her fourth Mainstage production for IU Theatre. Her recent credits

include: IU Department of Theatre & Dance's *Vox Pop!* (Troubadour #8), *Orlando* (Grimsditch/Russian Sea Man) and *Everybody* (Somebody), Palos Verdes High School's *Chicago* (Matron "Mama" Morton), *Urinetown* (Little Becky Two Shoes), *Footloose* (Betty Blast), *A Midsummer Night's Dream* (Peter Quince), *Crazy for You* (Patricia Fodor/Follies Girl), and for Palos Verdes Performing Arts, *We Will Rock You* (Khashoggi). Emma is from Palos Verdes, California.

**FOLLOW US**  
 SCAN THE CODES BELOW FOR BEHIND THE SCENES CONTENT, SPECIAL EVENTS, AND MORE!

Ψ THEATRE, DRAMA, & CONTEMPORARY DANCE

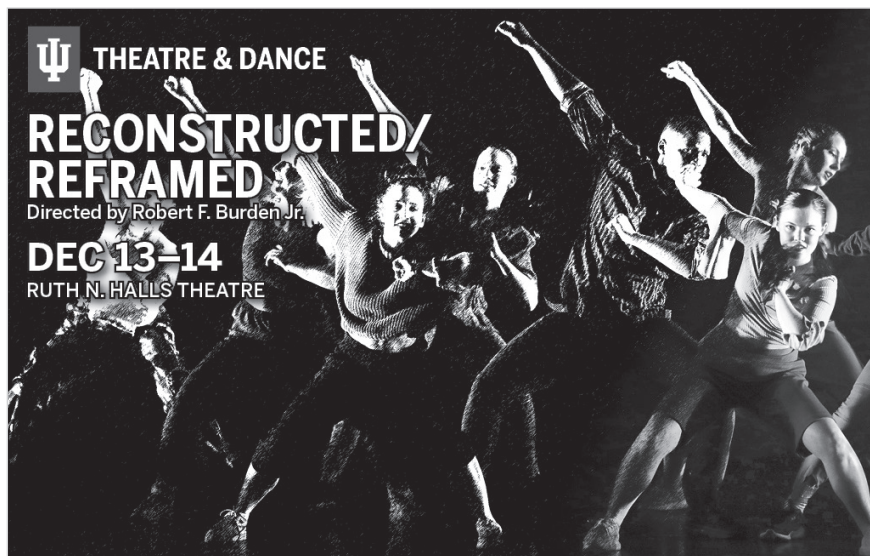
# UP NEXT AT IU THEATRE & DANCE:

*Reconstructed/Reframed highlights legends, masters, and stars whose artistry has impacted our society, as well as presents past faculty works from new perspectives. We share, perform, and preserve these choreographies to inform new generations of dance artists, and enrich audience experiences everywhere.*

Ψ THEATRE & DANCE

**RECONSTRUCTED/REFRAMED**  
 Directed by Robert F. Burden Jr.

**DEC 13-14**  
 RUTH N. HALLS THEATRE



# Artistic team



**LERALDO ANZALDUA**  
(Violence Coordinator)

is an actor, fight director and motion capture performer for film and video games. He is also a voiceover actor for anime. Leraldo's fight direction has been seen

at the Houston Grand Opera (including works with director Rob Ashford, John Caird and the American premiere of *The Passenger*, which later went on to Lincoln Center) and also the Alley Theatre –with Grey Boyd, Teresa Rebeck and Ken Ludwig –Houston Shakespeare Festival, Lake Tahoe Shakespeare Festival and Classical Theatre.



**NICK BOISVERT**  
(Paint Charge)

(he/him) is a second-year Scenic Design M.F.A. candidate and is very excited to be working on *F\*\*king A*. Most recently he worked as the properties manager

of *Sanctuary City*. Nick hails from Phoenix, Arizona's Grand Canyon University and is very excited to experience a new atmosphere of ideas.



**K'NYIA BUMPERS**  
(Technical Director)

(she/her/hers) is a second-year in the M.F.A. Theatre Technology program. K'Nyia graduated with her B.F.A from Valdosta State University, in Valdosta, Georgia, with

a focus in Technical Direction. Her recent credits include: *Vox Pop!* (Indiana University- Bloomington; Technical Director), *Flight* (Brevard Music Center; Assistant Technical Director), *La Bohème* (Brevard Music Center; ATD) and *The Threepenny Opera* (Brevard Music Center; ATD)



**ASHLEY CHRISTENSEN**  
(Lighting Designer)

Ashley is a second-year M.F.A. candidate from Portland, OR with a B.A. in Theatre from the University of Oregon. Recent credits include: *Steel Magnolias* with

Off Night Productions, *New Moves/New Directions* and *Cultural Immersion* with the IU Contemporary Dance Department, *Path of Miracles* with Oregon Bach Festival, *L'italiana in Algeri* with the University of Oregon Opera Ensemble, *Colonialism is Terrible, But Phô' is Delicious* with Oregon Contemporary Theatre and Sound Designer for IU's *Sanctuary City*.



**ASH COSSEY**  
(Scenic Designer)

Ash Cossey is a second-year M.F.A. scenic design candidate from Denver, CO. They graduated from Metropolitan State University of Denver with a B.F.A. in Applied Theatre

Technology and Design. For IU Theatre: *Pipeline* (Scenic Designer), *F\*\*king A* (Scenic Designer), *Cabaret* (Properties Manager), *Vox Pop!* (Properties Manager), IU ST 2024 (Properties Manager). Next projects for IU Theatre: *Twelfth Night* (Properties Manager), *Legally Blonde* (Properties Manager).



**JERRILYN DUCKWORTH**  
(Costume Designer)

Jerrilyn Duckworth is a multi-hyphenate creative (costume, hair, and makeup design) in the theatrical space. Bridging the Gap was founded in 2019. In the Fall of 2020,

Jerrilyn was appointed vice-chair of hair and makeup at the United States Institute for Theatre Technology (USITT). She held the post until 2023. She is thrilled to be returning to IU.

She holds a Master of Fine Arts in Costume Design and Production from the University of Alabama and

a Bachelor of Arts degree in general theatre from the University of Southern Mississippi. Jerrilyn's designs have been on the stage at the Pennsylvania Shakespeare Festival, People's Light, Coastal Carolina University, Indiana Repertory Theatre, Ensemble Theatre in Cincinnati, Oklahoma Shakespearean Festival, Indiana University, Illinois State University, and Millbrook Playhouse.

Jerrilyn continues her Bridging the Gap work. She travels to various universities to provide seminars about hair & makeup issues that plague BIPOC students and performers in the theatre industry. Bridging the Gap dives into the history of hair & makeup, wig prep on natural hair textures, correct language, products, and practical applications that would set any performer or creative artist up for success. The goal is to create an inclusive environment for all performers. Through her work, Jerrilyn has given over 300 workshops with attendance exceeding 3,500 people.



**NICHOLAS GWIN**  
(Head Electrician)

(he/him) is a third-year M.F.A. candidate from Atlanta, GA. In his time at IU he has designed and assisted for various productions and is excited to be a part of bringing

the world of this production to life. He is grateful for the support of his advisers, professors, friends and parents. He hopes you enjoy the show.



**MEGAN GRAY LEDERMAN**  
(Dramaturg)

Megan Gray Lederman (she/her/hers) is a theater artist and M.F.A. Dramaturgy candidate with Indiana University's Department of Theater,

Drama, and Contemporary Dance.



**KATE LOPEZ**  
(Asst. Costume Designer)

is a second-year M.F.A. candidate in Costume Design at IU. Her recent costume design work for IU theatre include:

*Pipeline, Dial 'M' for Murder* (IUST), and *Sanctuary City*. Recent credits also include: *25th Annual Putnam County Spelling Bee* (Assistant Costume Designer) at Indiana Repertory Theatre and *Private Lives* (Costume Designer) at Independent Shakespeare Company - Los Angeles. She is looking forward to her upcoming Costume Designs in IU's 2025 production of *Legally Blonde*.



**JENNY MCKNIGHT**  
(Director)

is an Assistant Professor in the Acting/Directing area beginning her eighth year at IU. Prior to joining the faculty here, Jenny taught at The University of Arkansas and

Oklahoma City University, and was a Guest Artist at Wabash College and in the Steppenwolf Theatre Arts Exchange Program. For IU Theatre, she's directed: *The Tragedy of Julius Caesar, Only Child, Little Women, Tiger Beat, Waycross, Bowling for Beginners, Measure for Measure, The 39 Steps and Dial M For Murder*. She also serves as Intimacy Choreographer and Consultant for departmental productions. Regionally, Jenny has directed *Measure for Measure* at Illinois Shakespeare Festival, *Leipzig* at Jewish Theatre of Bloomington and *The Lion, the Witch and the Wardrobe* at Cardinal Stage. A proud union member of both Stage Directors & Choreographers Society and Actors' Equity Association, Jenny has enjoyed opportunities to perform at Chicago-area and regional theatres including: The Goodman Theatre, Steppenwolf Theatre, Victory Gardens, Northlight Theatre, Remy Bumppo, Actors Theatre of Louisville, Indiana Repertory, Milwaukee Repertory, Kansas City Repertory, Clarence Brown Theatre, and Arizona Theatre Company, among many others.



**HEATHER MILAM**  
(Cutter/Draper)

is a professional draper, tailor, and experienced educator. Her costumes have been onstage at American Players Theatre, Illinois Shakespeare Theatre, Utah

Shakespeare Festival, Indiana University, University of Alabama, Playmakers Repertory Theatre, Kitchen Theatre, and many more including Broadway, Opera, Ballet, Concerts, and Movies. She is active in USITT

serving as Vice Commissioner, jury and editor for the Costume Poster Sessions, and occasional presenter at the national conferences. A native New Yorker, Heather obtained her bachelor's degree in theatre from Ithaca College. Upon graduation, she moved to NYC, where she made Broadway+ costumes at Barbara Matera Ltd. She obtained her M.F.A. in theatre from University of Idaho and spent a summer at the Moscow Arts Theatre School. Her current research involves a book project examining the Glenn Close Costume Collection.



**KRIS NICKESON**  
(*Sound Designer*)

Kris Nickeson holds a B.A. in Guitar Performance with an emphasis in Audio Engineering from Musicians Institute in Hollywood, CA. He is the former Production

Manager/Auditorium Coordinator and Lead Technician for Sound, Lighting and Video at the Broomfield Auditorium in Broomfield, Colorado where he worked with hundreds of groups - including sound design and design assist roles. He also supervised use of the City's mobile stage, ran FOH + Monitor Mixes, and co-booked the Summer Concert Series each year. Kris taught Live Sound Engineering, Recording Arts I and II and Recording Arts Capstone at Front Range Community College for 5 years, while helping develop the program and FRCC recording spaces, helping numerous graduates move into careers in the music industry.



**ALEXIS REAM**  
(*Assistant Stage Manager*)

Alexis Ream is a Sophomore majoring in theatre and drama and minoring in creative writing. This is her first show at IU and she is incredibly grateful to have

been given the opportunity to work as the ASM. While she doesn't have much to add to her bio, she is still happy to be here!



**OLIVER STARK**  
(*Props Manager, Assistant Scenic Designer*)

(he/him) is a first-year M.F.A. candidate in scenic design originally from Denver, Colorado. He graduated from Savannah College of Art and Design

with a B.F.A. in Production Design. Some of his recent credits include: *Beautiful: The Carole King Musical* (SCAD, Design Team) and *Somnus* (SCAD, Production Design). He is excited for everyone to see his first show at IU!



**KENDRICK WEINGAST**  
(*Stage Manager*)

(she/her) is excited to be a part of the *F\*\*king A* team for her first show at IU. Hailing from the D.C. region, Kendrick is excited to join the Directing M.F.A. cohort of 2027. So many

thanks to her family and SM team.

@kendrathefriendra, kendrickweingast.com

# Production team

## Director of Production

Ansley Valentine

## Intimacy Coordinator

Jenny McKnight

## Fight Director

Leraldo Anzaldúa

## Vocal and Text Coach

Grant Goodman

## Production Manager

Trish Hausmann †

## Technical Director

K'Nyia Bumpers

## Paint Charge

Nick Boisvert

## Scenic Designer

Ash Cossey

## Props Manager/Assistant

## Scenic Designer

Oliver Stark

## Department

## Technical Director

Jeff Baldwin

## Cutter/Draper

Heather Milam

## Wardrobe Supervisor

Lil Campos

## Dressers

Katy Plaziak

Alanna Porter

Ryan Yauger

## Costume Studio Employees

Ava Francisco

Beth Wallace

Chloe Williams

Ella Smith

Ian Rodriguez

Jocelyn Payne

Kate Lopez

Kenzie Jaye Laughlin

Laura Rong

Lil Campos

Madelyn DeBrine

Maura Phipps

## Costume Studio Supervisor

Cee-Cee Swalling

## Visiting Assistant Professor of

## Costume Design

Katie Cowan Sickmeier

## Assistant Professor of Costume

## Technology

Heather Milam

## Lighting Supervisor

Elizabeth G. Smith

## Head Electrician/Programmer

Nic Gwin

## Lighting Designer

Ashley Christensen

## Light Board Operator

Kinsey Grow

## Lighting Studio Crew

Hephzibah Oluwajobi

## Lighting Studio Employees

Ashley Christensen

Kyle Dickinson

Sophie Frank

Nicholas Gwin

Isa James

Sparrow Mansfield

Reed Simiele

Mads West

## Sound Studio Supervisor/

## Sound Designer

Andrew Hopson

## Sound Designer

Kris Nickeson

## Assistant Sound Designer

Matt Kohl

## Board Operators

Erica Angilletta

Evan Covey

Joy Luther

## Properties & Scenic Art

## Supervisor

Michelle Moore

## Scenic Studio Supervisor

Sean Dumm

## Scenic Studio Employees

Victor Beeler

Abby Bilson

Taylor Blum

Nick Boisvert

Gabi Buckels

K'Nyia Bumpers

Ash Cossey

Rylee Creed

Sofie Fareez

Sophie Frank

Morgan Hemgrove

Sean Holloway

Dominic Jones

Anna Keys

Frankie Martinez

John Morrison

Oliver Stark

Yu Wendy Wu

## Stage Deck Crew

Addison Owens

Bryce Cain

Evan Vaughan

Sophie Frank

Victor Beeler



†The director is a member of the Stage Directors and Choreographers Society, a national theatrical labor union.

\*M.F.A. Theatre Technology Thesis—Advisor: Jeff Baldwin

\*\*M.F.A. Lighting Design Thesis—Advisor: Allen Hahn

\*\*\*M.F.A. Costume Technology Thesis - Advisor Heather Milam



†The Production Manager is a member of the Actors' Equity Association, the Union of Professional Actors and Stage Managers in the United States.



# Faculty and staff

Leraldo Anzaldúa  
Jeff Baldwin  
Stafford C. Berry, Jr.  
Robert Burden  
Beatrice Capote  
Dr. Ana Candida Carneiro  
Selene B. Carter  
Christian Claessens  
Lucy Dodd  
Sean Dumm  
Ray Fellman  
Grant Goodman  
DJ Gray  
Allen Hahn  
Trish Hausmann  
Scott Hogsed  
Dr. Andrew Hopson  
Dr. Sarah Johnson  
Dr. Jennifer Lale  
Reuben Lucas  
Kristin Mann

Dr. Eric Mayer-García  
Jenny McKnight  
Jonathan R. Michaelsen  
Heather Milam  
Michelle Moore  
Linda Pisano  
Ilene Reid  
Catherine Richards  
Richard Roland  
Raymond Sage  
Cindi Severance  
Elizabeth Shea  
Katie Cowan Sickmeier  
Elizabeth G. Smith  
Carolynn Stouder  
Cee-Cee Swalling  
Susan Swaney  
Eriko Terao  
David Tracy  
Ansley Valentine

***Emerita / Emeritus***  
Leon I. Brauner  
Winona Lee Fletcher  
Roger W. Herzel  
Terry LaBolt  
Dale McFadden  
Marion Bankert Michael  
R. Keith Michael  
Marilyn Norris  
Wes Peters  
George Pinney  
Dennis J. Reardon  
Iris Rosa  
Robert A. Shakespeare  
Frank Silberstein  
Rakesh H. Solomon

# Administrative staff

**Chair/Producer**  
Linda Pisano

**Business Director/  
Financial Operations Manager/  
Fiscal Officer**  
Cindi Severance

**Public Relations & Audience  
Development Specialist**  
David Tracy

**Program & Project Director**  
Carolynn Stouder

**House Manager**  
Scott Hogsed



**MOTHER BEAR'S  
PIZZA**

*Enjoy the show...  
later, enjoy the pizza!*

**EAST: 1428 E. Third Street • 812 332-4495  
WEST: 2980 Whitehall Crossing • 812 287-7366**



***F\*\*KING A***  
**IS SPONSORED IN PART BY:**

---

A special thanks to the Theatre Circle Board Members  
for their additional financial support on our  
2024-2025 theatre productions.

Katy Bigge Kestner Fund

Herman B. Wells Estate

Joyce and Jim Grandorf

# IU Theatre & Dance supporter contributions

## CONTEMPORARY DANCE FUND CONTRIBUTORS

---

Lillian R. Feldman-Hill  
Jennifer L. Gray and Alan S. Bradley  
Deborah C. Galvin  
Robert J. Hamm Jr. and Gwendolyn A. Hamm  
Joy C. Johnson and Jerry L. Johnson J.D.  
Allen Hahn and Karen Keagle  
George and Mary Korinek  
Rose M. Krueger  
Laura Judson and Nikolaus Miller  
Harlan Lewis and Doris Wittenburg  
Meghan McGill  
Miah and Jonathan Michaelsen  
Elizabeth Jo Monnier  
Dennis W and Lynette A. Organ  
Linda Pisano  
Susan B. Glenn-Salerno and  
Richard P. Salerno  
Mary Strow  
Sheila A. Ward, Ph.D.

## JANE FOX FUND CONTRIBUTORS

---

Jane Fox  
Catharine and Thomas Buck  
Jacqueline and Stephen Frew  
Gwendolyn and Robert Hamm Jr.  
Rose Marie Krueger  
Christina Strack

## TED JONES STUDENT TRAVEL FUND CONTRIBUTORS

---

Katherine M. Aiken and Charles  
C. Aiken  
Louray G. Cain  
Lauren Hausmann  
Marianne Hausmann and William  
Hausmann  
Ted W. Jones  
Jane Pennell McIntosh  
Amy N. Osajima  
Eleanor Owicki  
Lea Plut-Pregelj and Vladimir N. Pregelj  
Doris F. Wittenburg and Harlan L. Lewis

## THEATRE & DRAMA FUND CONTRIBUTORS

---

Rita Murray Anderson and Robert D. Anderson  
Nancy Baird  
Sarah J. Baumgart and William R. Lozowski  
Thomas M. Baydala  
Gregory G. Bernet  
Judith Biersdorfer  
Josiah A. Brown  
Hans Buehler  
Joan M. Capella  
Hoagy B. Carmichael

Walter D. Carroll  
Ashley M. Chilla  
Wendy W. and Thomas P. Collins  
Allison C. Conrad and Donald W. Conrad  
Mary and Sheldon Cooper  
Georgia R. and Mark K. de Araujo  
Kimberlee M. Demers and Alan Demers  
Diane T. Dickinson Patrick  
Claire and Christopher Dippel  
Gresdna A. Doty, Ph.D.  
Priscilla J. and John G. Duman  
Sean M. Dumm  
Jacqueline and Richard Dunham  
Susanna C. and David H. Fennema, Ph.D.  
Fennema Family Trust  
Harriet and William Fierman  
Laurette S. Frazier  
Barbara Hatcher Gibler  
Elizabeth and Steve Hass-Hill  
Thomas V. Hinshaw  
Scott Hogsed  
Todd and Lynn Honderd  
Michael D. Huber  
Elizabeth and David Ihlenfeld  
Rose D. Krakovitz  
Laura Judson and Nikolaus Miller  
Linda S. Dunlevy Mitchell  
Robert J. Kelly, III and Judith R. Kelly  
Joe D. King  
Douglas and Kay Long  
Linda A. Longhofer  
The Honorable P.A. Mack, Jr.  
Tom Mazur  
Richard and Terry McCall  
Laura K. McClellan  
Marvin D. Moody, Ph.D.  
Lawrence Myers, Jr.  
Cyndi and Dale Nelson  
Christina D. Ondrik  
Robert R. and Donna L. Ormiston  
Rhoda and C.K. Peters  
Linda Pisano  
Phil and Joyce Probst  
David L. Rinear  
Donna Snow Robinson  
Corey Rosenberg  
Wendy Rubin  
Curtis and Judith Simic  
Patricia B Smith Rev Trust Peter F Smith Rev Trust  
Patricia F. and George E. Smith  
Patricia J. Smith  
Lynne Perkins Socey and Matthew Socey  
Diane J. Spofford  
Janice and Walter Stewart  
R. Brent Wagner  
June E. Weiland  
Doris Wittenburg and Harlan Lewis  
Wahl Family Charitable Trust  
Sharon L. and D. Terry Williams  
Donna and Richard Wolf  
Jo A. Zirkle

\* Denotes donors who have passed away, but whose gift continues to benefit the department and its students.

# Department awards, fellowships, scholarships, and endowments

## **Bright Family Theatre, Drama, and Contemporary Dance Fund**

Anne and Jim Bright

## **Catherine Feltus Preston Scholarship**

Catherine Preston Trust  
Charles R. Leinenweber

## **Betty and Charles Aidman (Spoon River) Scholarship/Fellowship**

Betty Aidman  
Charles Ogilvie Jr.  
C.H. Ogilvie Jr Revocable Trust

## **Betty and Charles Aidman (Spoon River) Scholarship/Fellowship Current Use**

Charles Ogilvie Jr.  
C.H. Ogilvie Jr Revocable Trust

## **B.F.A. Scholarship in Musical Theatre**

Anonymous

## **Colleen J. and W. Keith Alexander Scholarship**

W. Keith Alexander

## **Cynthia Dewees Nelson and Dale C. Nelson Musical Theatre Scholarship**

Cyndi D. and Dale C. Nelson

## **David S. Hawes Award**

Betty Anne Hawes  
Maile Jones  
Dan Jones

## **Department of Theatre, Drama, and Contemporary Dance Fellowship**

Anthony E. Courtade, Ph.D.

## **Donnelly-Brown Fund for Theatre & Drama**

Benita Gail Brown  
Brian Thomas Donnelly

## **Dr. James F. Elrod Scholarship in Theatre & Drama**

James F. Elrod

## **Featheringill Theatre and Drama Scholarship**

Jack L. Featheringill

## **Fontaine Syer Directing Fellowship**

## **in Theatre**

Susan Greenberg  
John Rusher and  
Mary K. Nash Rusher  
Henry Woronicz

## **Foster Harmon Graduate Fellowship in Theatre**

L. Foster Harmon

## **Foster Harmon Undergraduate Scholarship in Theatre**

L. Foster Harmon

## **Frank and Becky Hrisomalos Scholarship in Theatre & Drama**

Becky Hrisomalos  
Katy Bigge Kestner Fund  
Richard and Alicia Lytle

## **George Pinney Musical Theatre Scholarship**

Anne and Jim Bright  
Paul Goldberg  
Caroline Kennedy  
Kay Long  
P.A. Mack  
Jerry and Lucy McIntosh  
Marilyn Norris  
Ilene and John Reid  
Sue Waggoner

## **Harlan L. Lewis and Doris F. Wittenburg Scholarship in Theatre and Drama**

Doris F. Wittenburg  
and Harlan L. Lewis

## **Harlan L. Lewis Family Scholarship**

Harlan L. Lewis and  
Doris F. Wittenburg

## **Harv and Connie Hegarty Theatre and Drama Production Fund**

Harv and Connie Hegarty

## **Helen Sarah Walker Scholarship**

Michael L. Walker  
Baker Hughes Foundation  
Cory and Margaret Baumhardt  
Irwin and Lois Jacobs

## **Herman B. Wells Estate**

Herman B. Wells Estate

## **Howard Jensen Endowment**

Howard J. Jensen, Ph.D.

Thor R. Steingraber

## **IU Summer Theatre Fund**

Robert K. and Danita H. Forgey

## **Jay Mark Scholarship in Theatre & Drama**

Alvin Goldstein

## **Joyce and Jim Grandorf Theatre, Drama, and Contemporary Dance Fund**

Joyce and Jim Grandorf

## **Katy Bigge Kestner Fund**

Elmer N. Kestner, III  
Nick Kestner

## **Kimberly S. Hinton Memorial Scholarship in Contemporary Dance**

Bridget Baliot  
Jennifer Gray and Alan Bradley  
Madison Colquette  
Eileen Curley  
Angela Gast  
Lois and Richard Gast  
Nancy Gray McKelvey and  
Raymond McKelvey  
Suzanne and Keith Hinton  
Steven Jarosz  
Laura and Nikolaus Miller  
Reuben Lucas  
Eleanor Owicki  
Amanda and William Peterson  
Linda Pisano  
Bret Popper  
Karyn Rahn and Bradley Strode  
Cat Richards  
Elizabeth and John Shea  
Jamie and Jonathan Stuckey

## **Lee Martin Scholarship**

Nicole Kellogg  
Bryant H. and Maria M. Owens  
Linda M. Pisano  
Kaityln L. Smith  
Bhavna Vasudeva  
Alexandra Webb

## **Lee and Deb Norvelle Fund**

Lee Norvelle, Ph.D., LL.D

## **Lora C. Shiner Memorial Scholarship**

Lora Shiner Foundation

**Marion Bankert Michael Student Assistance Fund in Theatre and Drama**  
R. Keith Michael, Ph.D.  
and Marion B. Michael

**Murray and Sue Robinson Scholarship**  
F. Murray Robinson, C.P.A.  
and W. Sue Robinson

**Musical Theatre Undergraduate Scholarship**  
Clinton D. Roeth-McKay, Ph.D.  
and Peter J. Roeth-McKay

**Nota Scholl McGreevey Scholarship**  
John and Nota McGreevey

**Peglow-Blessing Family Performing Arts Scholarship**  
Sue Ellen Peglow

**Ralph Collins Memorial Lectureship**  
David Collins  
Dorothy Craig Collins  
Wayne Craig

**Richard L. Scammon Award**  
Bryce Broughton  
Barbara Lockard-Zimmerman

**Robert Preston Scholarship**  
Catherine Preston Trust  
Charles R. Leinenweber

**Rosemary R. Schwartz Scholarship**  
Patricia J. Redens Wrege

**Suzanne M. Collins and Charles A. Pryor Scholarship**  
Suzanne M. Collins and  
Charles A. Pryor

**Student Showcase Fund**  
Stephen C. and Sandra  
Schultz Moberly  
Curtis R. and Judith E. Simic  
Samuel R. and Patricia S. Arbery  
Kenneth M. Towel, Jr., M.D.  
and Brenda M. Towel  
Jefrey L. and Pamela Jones  
Davidson, J.D.  
David J. and Carolyn M.  
Emmert, Ed.D.  
Anne and Jim Bright  
Sue Huffman and  
Winston G. Shindell  
George B. Pinney  
and Scott B. Jones  
Martin J. Kaplan, M.D.  
and Linda K. Kaplan

Doris F. Wittenburg  
and Harlan L. Lewis  
Dale C. and Cyndi D. Nelson  
Stephen C. and Jo Ellen Ham  
Anne T. Fraker and  
Richard J. Rose, Ph.D.  
Dr. Kenneth M. Towel MD  
& Brenda M. Towel JT TEN  
Anne Fraker Revocable  
Living Trust  
Martin and Linda Kaplan  
Revocable Trust  
Ruth Albright  
August Semenick  
Carolyn A. Bailey  
Robert W. Galm  
Diana Dehart Lehner  
Athena R. Hrisomalos  
John D. Hobson  
James C. Craig, Ph.D.  
Judith L. Schroeder  
Iris F. Kiesling  
Terry L. Labolt  
Virginia Semenick

**Theatre Circle Scholar Award**  
Members of Theatre Circle

**Theatre Circle Fund**  
Earl F. Luetzelschwab  
and Deborah Burkhart

**Theatre and Drama Center Endowment**  
Carl F. Kiehler

**Theatre & Drama Production Endowment**  
Phyllis J. Horton  
Linda M. Pisano

**Theatre, Drama, and Contemporary Dance Scholarship**  
D. Terry Williams, Ph.D.  
and Sharon L. Williams  
Mike Knight

**Theresa Anne Walker Scholarship**  
Michael L. Walker

**Fran Snygg Endowment**  
Marianne and Charles E. Snygg  
Gertrude and Seymour Alberts  
Anita Aldrich Ed.D.  
Anitra Bareikis  
Patricia E. Biddinger  
Emily Ann Bogard  
Leon and Roberta Brauner  
James P. Burling II  
Robert E. Burton  
Marcia M. Busch-Jones  
Jean E. Campbell  
Ann M. K. and Thomas R. Carter Ph.D.  
Orchard Close

Evelyn A. Davies Ed.D.  
Deborah A. Freund Ph.D.  
Robert L. Gluckstern  
Janet Hamburg  
Patricia Dain Haskell  
William H. Hays III  
Robin Herrington-Bowen  
Rachel and David M. Hertz  
Jo An Huff  
Peter P. Jacobi  
Thomas J. Knesner Ph.D.  
Rachel Lampert  
Bernice A. Pescosolido Louise  
Rebecca Rarick  
Nancy and James W. Reeves  
Edward and Sydney Regan  
Robert and Sandra Reiberg  
Carlos Rodriguez  
Geneva B. Scriggins  
Evelyn S. Turner  
Allison and Thomas Walsh  
Byron P. Wheeler  
Mark F. Wheeler and Jan Wheeler Ph.D.

**Jason W. Stradtman Prize**  
Alan Airth  
Byron and Kimberly Antillon  
Johnston Atoll  
Dawn and Paul Barrera  
Ali and Robert Bartholomew  
Darlene Bishop  
Donna Colwell  
Bruce Creamer  
Donald and Patricia Crouse  
Kathleen Galindo  
Adelita Garza  
Arlene and Martin Glassman  
Diane and Frederic Hite  
Lucena A. Hocking  
Denis and Robin LaBonge  
Anthony and Karin Lekas  
Dick and Karen Lemen  
Gael and Glenn Libby  
Fred and Peggy Lynn  
Judith and William Maisel  
Sharon Merz  
Marybeth and Robert  
Michel  
Susan Moore  
Elaine Peterson  
Robert Radus  
Joanne and Paul Reynolds  
Martha and Robert Santos  
Sharon Seymour  
Martin and Charlotte Stradtman  
Dennis and Sharon Tase  
Howard and Joan Thompson  
Catherine and William Titterud  
Andrew and Rena Wellman  
Lynda Wicks  
Audrey and Robert Windsor

# Theatre Circle

Theatre Circle was founded in 1978 to encourage the study and practice of theatre arts at IU and to promote an awareness of IU Theatre throughout the community. Theatre Circle members enjoy a variety of benefits, including

acknowledgment in all IU Theatre programs; emailed information about all performances; glimpses behind the scenes; exclusive talks by directors, designers and theatre scholars; special event invitations; and much more.

## SUSTAINING BENEFACTORS

*(Gifts of \$5,000 and above)*

Rodger & Diana Alexander Joint Trust  
Teresa and John Ayres  
Benita Brown and Brian Donnelly  
Jean\* and Doris Creek  
Community Foundation of Bloomington & Monroe County  
Connie and Harv Hegarty  
Becky and Frank\* Hrisomalos  
The Lawrence W. Inlow Foundation  
Carl F. Kiehler  
Sara\* and Bob LeBien  
Marion Bankert Michael and R. Keith Michael  
Dr. Howard Polley  
Reva\* and Jack Shiner  
Mr. and Mrs. Kenneth W. Sparks  
Bruce and Shannon Storm - In Honor of George Pinney  
Bruce and Shannon Storm - In Honor of Tiffany Storm Ericson  
Harlan Lewis and Doris Wittenburg  
Margaret\* and William Yarber

Harlan Lewis & Doris Wittenburg – *Pipeline*  
Ruth Albright – *Head Over Heels*  
Carolyn Bailey – *Head Over Heels*  
Katy Bigge Kestner Fund – *Head Over Heels*  
Connie & Harv Hegarty – *Head Over Heels*  
Cyndi & Dale Nelson – *Head Over Heels*

## BENEFACTOR (\$1,000 and above)

Diana and Rodger Alexander  
Teresa and John Ayres  
Carolyn Bailey  
Anne and Jim Bright  
Kathryn and Barry Brown  
Julie A. and Cary K. Curry  
Carolyn and Dave Emmert  
ExxonMobil Foundation  
Phil Evans and Herbert Kuebler  
Jacqueline and William Gilkey  
James N. and Joyce Grandorf  
Stephen C. and Sandra S. Moberly  
Cyndi and Dale Nelson  
Schwab Charitable Fund  
Paula W. Sunderman  
Judy Schroeder

## PATRON (\$500 –\$999)

American Online Giving Foundation  
Ruth Albright  
Dallas Jewish Community Foundation  
Deborah Burkhart and Earl F. Luetzelschwab  
Eli Lilly & Company  
Jacqueline and James Faris  
Jo E. and George L. Fielding  
Sandra and Don Freund  
William A. and Jacqueline Gilkey  
Michael Gleeson  
Jo Ellen and Steve Ham  
Marlin G. Howard  
Kate Kroll  
Howard D. Mehlinger

Elizabeth C. Raff  
Stanley Ritchie  
Idalene Kesner and Paul Robins  
Wendy A. Rubin  
Carol and Wade Peacock  
Laura C. Trout  
Bradley C. Wheeler, Ph.D.

## SPONSOR (\$250–\$499)

Samuel R. and Patricia S. Arbery  
Katherine and Charles Aiken  
Terry Baer  
Douglas and Hilary Anderson  
Shirley Bernofsky  
Cathleen M. Cameron  
Ashley and Mark Chilla  
Jean Cook  
Michael E. Gleeson, Ph.D.  
John D. Hobson  
Marlin G. Howard  
Liam Castellan and Angela Huxford  
Ronald Kovener  
Margaret and Donald Jones  
Judith Mahy and Richard M. Shiffrin  
Howard D. Mehlinger, Ph.D.  
Sherry and Dale McFadden  
Maribeth and Richard McKaig  
Joanne Passet and Deborah Wehwman  
Katherine and Travis Paulin  
George Pinney and Scott Jones  
Linda Pisano  
Mary F. Popp  
Anne T. Fraker and Richard Rose  
Sue Spgambelluri  
Phyllis C. Schwitzer  
Erdine M. Simic  
Alan and Kathryn Somers  
Jeffrey and Michelle Stuckey  
Barbra Suthers  
Young Ae and J. Timothy Tresslar  
Patricia and William Wheeler  
Andrea White and Brad Schiesser  
Donna and Richard Wolf

## ANNUAL GIVING

July 1, 2023–  
July 1, 2024

## ASSOCIATE PRODUCERS (\$2,500)

Phil Evans and Herbert O. Kuebler – *Into the Woods*  
Phil Evans and Herbert O. Kuebler – *Orlando*  
Kathryn S & Barry Brown – *Cabaret*  
Judy Schroeder – *Cabaret*  
Anne & Jim Bright – *Cabaret*  
William Hegarty – *Cabaret*  
The Howard Jensen  
Endowment for Classic Theatre – *Measure For Measure*

\* Denotes donors who have passed away, but whose gift continues to benefit the department and its students.

**CONTRIBUTOR****(\$100–\$249)**

Bloomington Thrift Shop–  
Psi Iota Xi  
Joan Marie Capella  
Joan H. Caulton and Edwin H.  
Greenebaum  
Sandra Churchill  
Patricia J. and Jeffrey L.  
Davidson  
Samuel Davis  
Rosemary and Richard Dever  
Lee Ehman and  
Barbara Wilcox  
Cheryl A. Engber  
David and Tyler Ferguson  
Ferguson Law  
Shirley A. Fitzgibbons  
Lee W. Formwalt and  
Richard P. Weichert  
Anne T. Fraker and  
Richard J. Rose, Ph.D.  
Linda F. Gregory  
Sandra Hall  
Steven L. Hendricks  
Darla Brown and Michael Hunt  
Bethany Kaszynski  
Iris F. Kiesling  
Ronald Kovener  
Diana Dehart Lehner  
Carolyn M. Lipson-Walker and  
George L. Walker  
Douglas A. and Kay L. Long  
James H. and  
Jeanne L. Madison  
Nancy G. Martin  
Tom Mazur  
James L. McLay  
Virginia Metzger  
Gerry Miller  
Patricia W. Mulholland  
Denise and Harold Ogren  
Katherine and Travis Paulin  
Carol Pierce  
Shirley R. Pugh  
Scott and Susan Putney  
Lislott and John Richardson  
F. Wayne Roberts, Jr.  
Donna Snow Robinson  
Marilyn F. Saum  
Jake Scott  
Rob Shakespeare  
Marie Shakespeare  
Erdine M. Simic  
Lynne Perkins and  
Matthew Socey  
N. J. Stanley, Ph.D.  
Barbara J. Suthers

Gerry E. Titus  
Scott W. and Teresa M. Turner  
Susan and Steven Waggoner  
Judy Walcoff  
Mary Wennerstrom Phillips  
Judy Wertheim

**DONOR (up to \$99)**

Elaine and Philip Amerson  
Ernest Bernhardt-Kabisch  
Amy M. Briseño  
Carroll Britch  
Michael E. Hunt and  
Darla S. Brown  
Angela D. Huxford and  
William K. Castellan  
Ruth Chesmore  
Susan E. and John I. Cronkhite  
John C. Custer  
Gresdna Doty  
Cheryl A. Engber, Ph.D.  
Pam and William Fawcett  
Jay Hemphill  
Bonnie Brownlee and  
Bruce L. Jaffee  
Barbara W. and Vern Jorck  
Priscilla Osovski and  
William A. Manwaring  
Marilyn F. Norris  
Kathryn A. Oyer  
Michael D. Scott  
August Semenick  
Virginia Semenick  
Patricia and Peter Smith  
Dr. N.J. Stanley  
Gene and Ellen Stern  
Kelli and Anthony Zabel

**HONORARY  
LIFETIME MEMBERS**

Harv and Connie Hegarty  
John Kinzer  
Marion Bankert Michael and  
R. Keith Michael  
Marilyn Norris  
Susan Parrish and  
Thomas P. Shafer

**MEMORIALS**

David Albright  
Eleanor Auer  
J. Jeffery Auer  
Roberta Brauner  
Richard C. Burke  
Ledford and Julia Carter

Nelda Christ  
Hattie Clark and Peter Jacobi  
Dorothy (Dottie) Collins  
Don Cook  
Donna Creek  
Winona Fletcher  
Cyril M. Franks  
Violet Franks  
Charles and Adele Gallus  
Martha and Victor Harnack  
Sandra L. Hertling  
Frank Hrisomalos  
Howard Jensen  
Harold Watling Jordan  
Lambert and Elizabeth Kiehler  
Carolyn Kovener  
Sara LeBien  
Nita Levison  
Jeanette Calkins Marchant  
Rosemary Miller  
Leonard M. Phillips  
Robert L. Shettleroe  
Reva Shiner  
Coleman Stanley  
Fontaine Syer  
Grafton Trout  
Herman B. Wells  
Albert Wertheim  
Nathan and Pamela Zauel  
Paul N. Zietlow

**THEATRE CIRCLE  
BOARD  
2023–2024****President**

Dale McFadden

**Vice President**

Sandy Hall

**Secretary**

Eric Shelley

**Treasurer**

Shannon O'Connor Starks

**Members**

Paul Dailly  
Pam Davidson  
Harlan Lewis  
Cyndi Nelson

**EX OFFICIO:**

Linda Pisano

\* Denotes donors who have passed away, but whose gift continues to benefit the department and its students.



# Town Planner®

YOUR COMMUNITY CALENDAR

*What's happening  
around Bloomington?*



Sign up to receive our  
weekly e-newsletter!

School Schedules



Community Events



Local Businesses



Valuable Coupons

Browse our local online  
events calendar



Printed calendars & coupons mailed to  
Bloomington homes every December

**TownPlanner.com**

Local Bloomington Owners  
John & Sharon Martin  
jmartin@townplanner.com

One World at

# Woolery MILL

*with One World Catering*



up to 500 guests  
free parking  
industrial chic  
additional amenities

[oneworldatwoolery.com](http://oneworldatwoolery.com)

(812) 334-3663

[catering@bloomington.com](mailto:catering@bloomington.com)

  
one  
world  
Catering



catering for all occasions  
*available at your venue or Woolery Mill*

[oneworldcaters.com](http://oneworldcaters.com)

(812) 334-3663

[catering@bloomington.com](mailto:catering@bloomington.com)



INDIANA UNIVERSITY

## PRINTING SERVICES

We serve all of Indiana University, as well as the general public.  
We're here to help you with all your Printing,  
Large Format, and Mailing needs!

### Official IU Stationery

*(Business Cards, Letterhead, Envelopes)*

- Brochures/Booklets • Flyers • Invitations • Pads
- Postcards • Posters • Table Tents • Magnets • Stickers

See our Website to Download InDesign Templates

*Did you know we can also do...*

### Large Format:

- Retractable Banner Stands • Wide Format Banners
- Board Posters • Yard Signs • Vehicle Magnets

### Mailing:

Inserting, Addressing and Mailing Services

### Free On-Campus Delivery!

*Convenient Billing to IU Department Accounts*

Use Object Code 4166 for Printing Services

*and we also accept Credit Cards.*

.....  
*Call or email us for assistance at:*

**812-855-6072 • [docuserv@iu.edu](mailto:docuserv@iu.edu)**

**Art Lyon - Prepress/Cust. Service Specialist 812-855-6072**

**Cory Wilson - Sr. Prepress Specialist/Cust. Support 812-855-1226**

**Jon Pittman - Printing Services Manager 812-856-0027**

**Dan Gummere - Director of DALs 812-327-0783**

**Dave Stewart - Campus Liaison**

**Indiana University Printing Services**

**3050 E. Discovery Parkway • Bloomington, IN 47408**

**(10th and Discovery Parkway)**

**<https://printing.indiana.edu>**

# **SPECIAL THANKS** **to our 2023–2024** **and 2024–2025 season** **Associate Producers**

The contributions of Associate Producers directly fund an IU Theatre production of the donor's choice. As an associate producer, you will help directly support the cost of a production's costume, scenic, lighting, sound and projection design.

Your name will be featured in our programs and all curtain speeches. You will also enjoy benefits as year-round members of Theatre Circle, an organization founded to promote and encourage the study and practice of theatre arts in the Department of Theatre, Drama and Contemporary Dance and an awareness of theatre throughout the community.

## **FOR MORE INFORMATION,**

please scan the QR code, pick up a Theatre Circle brochure in the lobby, or contact David Tracy at [davtracy@iu.edu](mailto:davtracy@iu.edu)

You can also visit the Department of Theatre, Drama, and Contemporary Dance website at [theatre.indiana.edu](http://theatre.indiana.edu) and select the Theatre Circle link under Alumni+Giving.



# MOTHER BEAR'S PIZZA



**Bloomington, Indiana**

**812-332-4495**

**[motherbearspizza.com](http://motherbearspizza.com)**

“The novel is more of a *whisper*,  
WHEREAS THE STAGE IS A  
**SHOUT**”

–Robert Holman

ROBERT HOLMAN WAS AN ACCLAIMED BRITISH  
DRAMATIST. HE WROTE MANY PLAYS,  
INCLUDING *GERMAN SKERRIES*, *MUD*, AND *A BREAKFAST OF  
EELS*. HE ALSO WROTE FOR TELEVISION AND RADIO AND  
WAS A RESIDENT DRAMATIST AT THE NATIONAL THEATRE  
AND WITH THE ROYAL SHAKESPEARE COMPANY.



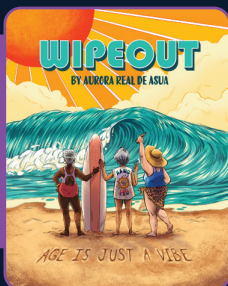
# CONSTELLATION

STAGE + SCREEN

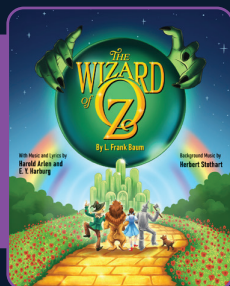
Book tickets today!  
SeeConstellation.org | 812.336.9300

## 24/25 SEASON

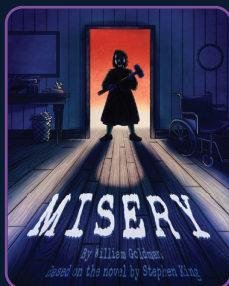
CONSTELLATION  
MAINSTAGE



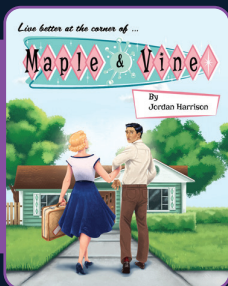
Sept 5 - 29



Dec 12 - 29



Jan 30 - Feb 16

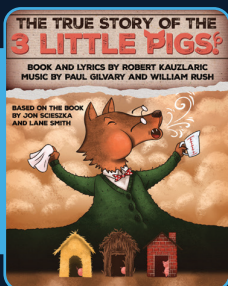


Mar 27 - Apr 13



Jun 4 - 29

CONSTELLATION  
FOR KIDS



Oct 25 - Nov 10



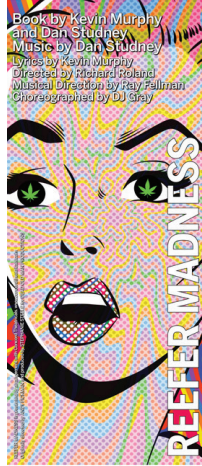
Apr 25 - May 11

Connecting Audiences Through World-Class Theater and Film



SEPT-OCT  
27-5

WELLS-METZ THEATRE



OCT-NOV  
25-2

RUTH N. HALLS THEATRE



NOVEMBER  
14-22

WELLS-METZ THEATRE



DECEMBER  
13-14

RUTH N. HALLS THEATRE



JAN-FEB  
24-1

STUDIO THEATRE



FEBRUARY  
14-22

RUTH N. HALLS THEATRE



MARCH  
6-14

WELLS-METZ THEATRE



APRIL  
18-26

RUTH N. HALLS THEATRE



MAY  
2-3

WELLS-METZ THEATRE

2024/2025 SEASON  
Live performance, living impact

