

IU Theatre + Dance acknowledges and honors the Indigenous communities native to this region and recognizes that Indiana University Bloomington is built on Indigenous homelands and resources. We recognize the myaamiki, Lënape, Bodwéwadmik and saawanwa people as past, present and future caretakers of this land.

LIVE PERFORMANCE

The mission of the Department of Theatre, Drama and Contemporary Dance is to advance the art, scholarship and appreciation of theatre and dance and its place in society. We pursue this mission collectively and as individuals through theatrical productions, scholarship and publication, presentation of our work in national and international venues, formal instruction and individual mentoring.

The Department of Theatre, Drama and Contemporary Dance is accredited by the National Association of Schools of Theatre and is a member of the University/Resident Theatre Association and United States Institute for Theatre Technology.

LIVING IMPACT



Message from the producer



Dear Friends,

We are delighted to welcome you to IU Summer Theatre 2024!

This year we present exciting artistic teams with stage directors Ansley Valentine, and Jenny McKnight at the helm, complemented by Music Director Brandon Magid and Choreographer DJ Gray.

Focusing in on our mission to provide professional experiences for our students and audiences, we are proud of the guest artists and students who bring their expertise and artistry to our summer stage. Please be sure to read their bios and learn more about them. Our artistic team, human resources, and our cast include seasoned professionals, students from several of our department majors, and our treasured alumni.

Our IUST would not be possible without YOU, our audiences, but also without the steadfast friendship and generous gifts from Associate Producers, the Theatre Circle, and the Lee & Deb Norvelle Guest Artist Fund as

well as additional funding from the College of Arts and Sciences in support of our academic and artistic mission.

We embrace our tradition of bringing well-crafted summer theatre and musicals to Indiana audiences. We are also committed to ensuring our artists' salaries are commensurate with the profession and that our production quality (costumes, scenic, etc.) remains at high standards. Your continued support ensures that IUST, both this season and for many seasons to come, is a destination for the arts that values health, equity, and artistry for our student and alumni artists, for our professional guest artists, and for our wider community.

Thank you for attending and supporting IUST and its mission of bringing professional theatre in support of our academic programming to our summer Bloomington and Indiana audiences.

Enjoy the show!

Linda Pisano
Producing Artistic Director, IUST
Chair & Professor,
Dept of Theatre & Dance

PRESENTS

DIAL M FOR MURDER

Adapted by Jeffrey Hatcher
From the original by Frederick Knott

DIRECTOR	Jenny McKnight [^]
SCENIC DESIGNER	Reuben Lucas*
COSTUME DESIGNER	Kate Lopez
LIGHTING DESIGNER	Russell Long
SOUND DESIGNER	Andrew Hopson*
STAGE MANAGER	Madeline Tagua-Horne
ASST. STAGE MANAGER	Olivia Johnson
DRAMATURG	Spencer Wilkes Fields

Cast

MARGOT WENDICE	Sofia Salgado
MAXINE HADLEY	Isabelle McNamara-Angel
TONY WENDICE	Bobby Ayala Perez
LESGATE (U/S TONY WENDICE)	Ryan Andrews [†]
INSPECTOR HUBBARD	Trevele Morgan
COVER: LESGATE, INSPECTOR	Jeremy Clark
COVER: MARGOT, MAXINE	Asal Hojabrpour



[^]The director is a member of the Stage Directors and Choreographers Society, a national theatrical labor union.



*Member of United Scenic Artists Local 829, IATSE.



[†]Appearing with permission from Actors' Equity Association (AEA)

"Dial M for Murder (Hatcher)" is presented by arrangement with Concord Theatricals on behalf of Samuel French, Inc. www.concordtheatricals.com Originally commissioned and produced at The Old Globe Barry Edelstein, Erna Finci Viterbi Artistic Director Timothy J. Shields, Managing Director

The video and/or audio recording of this production is strictly prohibited. Do not use cell phones, pagers, or other devices that may emit sound or light.

WELLS-METZ THEATRE | JULY 5-28, 2024

Cast



RYLAN ANDREWS[†]
(*Lesgate, U/S Tony Wendice*)

is a second-year M.F.A. Acting candidate from Portland, OR. Past credits include: *The Radium Girls: A Jaw-Dropping Musical* (Rufus), *The Rocky Horror Show* (ensemble), and *Band*

Geeks: The Musical (Elliot). He wants to thank his family and friends for their unyielding support. @rtayrews



JEREMY CLARK
(*Cover: Lesgate, Inspector*)

is a rising Senior in the B.F.A. Musical Theatre program at IU Bloomington with a minor in Fitness Instruction. He is thrilled to be making his IUST debut alongside a group of kind,

caring and talented individuals. Jeremy is a Certified NASM Personal Trainer.



ASAL HOJABRPOUR
(*Cover: Margot, Maxine*)

is an IU M.F.A. acting candidate from Iran who graduated from Soore University with a B.A. in dramatic literature. She is thrilled to be the only international student in the

acting group. Asal has experience teaching in the field of acting and performing arts with children and teenagers. Her future goals include working in various professional mediums such as theater, film, television, and video games.



ISABELLE MCNAMARA-ANGEL
(*Maxine Hadley*)

is a second-year IU M.F.A. Acting candidate from Queens, NY. *Measure for Measure* was her first production for IU Theatre. She recently graduated with a B.A. in both

Theatre and History from the College of the Holy Cross in Worcester, MA. Some recent credits at HC include: *Company* (Joanne), *RASA: A Chamber Opera* (Jasmine), *Our Town* (Mrs. Gibbs), *She Loves Me* (Ilona Ritter), *Cabaret* (Helga).



TREVELE MORGAN
(*Inspector Hubbard, Fight & Intimacy Captain*)

(he/him) is a second-year M.F.A. Acting student candidate from Tampa, FL. Previous credits include: ISA in *Kill Move Paradise*, Oliver in *As You Like It*

Lincoln in *Topdog Underdog*, and Xaiver in *Pipeline*. Trevele is excited to work with this wonderful team and thanks family and friends for their continued support.



BOBBY AYALA PEREZ
(*Tony Wendice*)

(he/him) Bobby is an actor, teacher, and artist. As a recent graduate of the M.F.A. Acting program at Indiana University, he's thrilled to return to IUST, where he was last seen

in *The 39 Steps*. Recent credits include: *The Play That Goes Wrong* (Jonathan), *Measure for Measure* (Angelo), and *Holmes & Watson* (Holmes 2). He and his partner, who is also an actor, reside in Bloomington with their chihuahua, who is not an actor. bobbyayalaperez.com



SOFIA SALGADO
(*Margot Wendice*)

is a Cuban/Mexican theatre and film actor based in Miami, Florida and Bloomington, IN. She is currently a second-year M.F.A. Acting candidate at IU and has received a

B.F.A. in Theatre Performance at Florida International University. Some of Sofia's other credits at IU include: *Measure for Measure* (Isabella). Credits from FIU include: *Necessary Targets* (Zlata), *Passage* (Q), and *The House of Bernarda Alba* (La Poncia). Other credits: *Macbeth* (Lady Macbeth), *Haunt Me in the Night*, (Tabitha), and *Everything Has Led to this Moment* (Rita) amongst other projects.



[†]Appearing with permission from Actors' Equity Association (AEA)

DIAL M FOR MURDER
IS SPONSORED IN PART BY:

Associate Producers

Phil Evans and Herbert Kuebler

IUST production staff

Stage Manager,
Dial M For Murder
Madeline Tagua-Horne

Assistant Stage Manager,
Dial M For Murder
Olivia Johnson

Stage Manager,
Forever Plaid
Sophie Frank

Assistant Stage Manager,
Forever Plaid
Molly Lenig

Dialect Coach,
Dial M for Murder
Nancy Lipschultz

Fight Director/Vocal Coach,
Dial M For Murder
Grant Goodman

**Festival Technical Director/
Props & Scenic Paint**
Sean Dumm

Scenic Studio Supervisor
Sean Dumm

Technical Director
Frankie Martinez

**Assistant Technical Director/
Carpenter**
Rachel Shearon

**Scenic Charge/Assistant Scenic
Designer**
Nick Boisvert

Props Manager
Ash Cossey

**Carpenter/Run Crew/
Changeover Crew**
Adam Mohrs
Brian Davis

Costume Studio Supervisor
Cee-Cee Swalling

Cutter/Draper
Beth Wallace

Wardrobe Supervisor/Stitcher
Nicole Hiemenz

**Stitcher/Wardrobe Crew/
Daytime Maintenance**
Jocelyn Payne
Grania Whelan

Lighting Studio Supervisor
Betsy Smith

Head Electrician/Programmer
Ashley Christensen

Lighting Crew
Colin Anderson
Jocylon Evans
Rowan Farabaugh

Board Op, *Dial M For Murder*
Ashley Christensen

Board Op, *Forever Plaid*
Rowan Farabaugh

Spot Ops, *Forever Plaid*
Colin Anderson
Jocylon Evans

Sound Studio Supervisor
Andrew Hopson*

**Sound Tech/Audio Mix
Engineer/Strike Crew
Generalist**
Bri Stoneburner

**Sound Tech/Board Op/Strike
Crew Generalist**
Jieun Ok



*Member of United Scenic Artists Local 829, IATSE.

Summer administration

IUST Producing Artistic Director
Linda Pisano

Associate Producer
Jenny McKnight

**Business Director/
Financial Operations Manager/
Fiscal Officer**
Cindi Severance

Program and Project Director
Carolynn Stouder

**Public Relations and Audience
Development Specialist**
David Tracy

Marketing Assistants
Spencer Wilkes Fields
Sheridan Schreyer

Production Manager
Trish Hausmann**

House Manager
Scott Hogsed

**Assistant House Managers/
Understudies**
Jeremy Clark
Jake Decker
Asal Hojabrpour



**The Production Manager is a member of the Actors' Equity Association, the Union of Professional Actors and Stage Managers in the United States.

PRESENTS

FOREVER PLAID

Written and Originally Directed and
Choreographed by STUART ROSS
Musical Continuity Supervision and
Arrangements by James Raitt
Originally Produced by Gene Wolsk

DIRECTOR	Ansley Valentine^
ASSOCIATE DIRECTOR	Lauren Diesch
CHOREOGRAPHER	DJ Gray^
MUSIC DIRECTOR	Brandon Magid
SCENIC DESIGNER	Reuben Lucas*
COSTUME DESIGNER	Cee-Cee Swalling
LIGHTING DESIGNER	Russell Long
SOUND DESIGNER	Andrew Hopson*
STAGE MANAGER	Sophie Frank
ASST. STAGE MANAGER	Molly Lenig
DRAMATURG	Sheridan Schreyer

MUSICIANS

Upright Bass
Max Rose

Drums
Francis Bassett-
Dilley

Rehearsal Pianist
Benjamin Watkins

Drums (7/13, 7/19)
Kyra McComb



^The director and choreographer are members of the Stage Directors and Choreographers Society, a national theatrical labor union.



*Member of United Scenic Artists Local 829, IATSE.

Cast

FRANKIE	Justin Tidd
SMUDGE	Devin McDuffy
SPARKY	Shane Stoltz
JINX	Marco Mouldrem
COVER	Jake Decker
VOICE OVER	Mark Chilla

FOREVER PLAID is presented through special arrangement with Music Theatre International (MTI). All authorized performance materials are also supplied by MTI. www.mtishows.com

The video and/or audio recording of this production is strictly prohibited.
Do not use cell phones, pagers, or other devices that may emit sound or light.

WELLS-METZ THEATRE | JULY 5-28, 2024

Cast



JAKE DECKER
(Cover)

(he/him) is a second-year B.F.A. Musical Theatre major with a minor in Computer Science from Haubstadt, IN. He is thrilled to be a part of IU

Summer alongside amazing castmates and an amazing creative team. Recent credits include: *Falsettos* (Marvin), *Urinetown* (Senator Fipp/Dance Ensemble), and *Addams Family* (Soldier Ancestor, Swing, Lucas U/S). He would like to express his gratitude for all the support from his family, friends, and mentors that helped him get where he is today.



DEVIN MCDUFFEY
(Smudge)

(he/him) is a third-year student getting his B.F.A. in Musical Theatre. He recently finished directing *Falsettos* with University Players and is excited to be

back on stage! For IU Theatre: *Cabaret* (Herman/Max), *Something Rotten* (Shakespeare), *Natasha*, *Pierre*, and *the Great Comet of 1812* (Ensemble, u/s: Pierre), *Joseph and the Amazing Technicolor Dreamcoat* (Judah), *The Threepenny Opera* (Pastor Kimble, u/s: Robert), *Black Superhero Magic Mama* (Tom Blackman/Human Hyena) For Constellation Stage & Screen: *Elf* (Ensemble, u/s: Manager) For Crossroad Rep.: *Cinderella* (Lord Pinkleton), *Magical Musical Cabaret* (Vocalist). Thanks to the cast and crew for all of their incredible work put into this amazing show! He is from Indianapolis, IN.



MARCO MOLLIDREM
(Jinx)

(he/him) is a third-year B.F.A. Musical Theatre major at Indiana University. He is originally from Houston, Texas. Marco recently made his directorial debut

directing *Be More Chill* through University Players this past Fall. IU Theatre credits include: *Natasha*

Pierre and The Great Comet of 1812 (Ensemble/Anatole Understudy) *Sueño* (3rd Soldier/ Astolfo u/s), *Company* (David). For Constellation Stage and Screen: *Elf: The Musical* (Charlie/Ensemble), *Curious George: The Golden Meatball* (Phineas T. Lightspeed). Marco would like to thank his family and friends for supporting his dream to perform and hopes you enjoy the show!



SHANE STOLTZ
(Sparky)

(he/him) is a recent graduate with a B.F.A. in Musical Theatre. He is from Bucks County, PA. Recent performances: *Joseph... Dreamcoat* (Joseph), *Great Comet*

(Ensemble), *The Threepenny Opera* (Officer Smith), *Carrie* (Swing/Tommy Understudy), *Spring Awakening* (Otto), *Footloose* (Willard). He wants to thank his family for supporting him, along with the fantastic creative team, cast and crew for all their hard work.



JUSTIN TIDD
(Frankie)

(he/him/his) is a recent graduate of the B.F.A. Musical Theatre program. He is from Indianapolis, IN. For Constellation Stage and Screen: *Matilda the Musical* (Male

Swing). For IU: *Into the Woods* (Rapunzel's Prince). For Indiana University: *Cabaret* (Male Swing/Ernst Understudy), *Something Rotten* (Ensemble), *Natasha*, *Pierre... 1812* (Dolokhov), *The Winter's Tale* (Stage Manager), *Sueño* (Assistant Stage Manager). For University Players: *Bright Star: Concert Version* (Daddy Murphy), *Puffs!* (Oliver), *SLIP!* (Stage Manager). Justin has been blessed to be a part of the IU Musical Theatre family and cherishes every incredible memory over the past four years. Many thanks to his family and friends for their support and encouragement in any/all endeavors!

Musical Numbers

On February Ninth (Underscore)

Chant. Deus ex Plaid

What Happens (Underscore)

Three Coins In The Fountain

Gotta Be This Or That

Undecided

Moments To Remember

Crazy 'Bout Ya Baby

The Osterizer School of Harmonic Theory

No Not Much

Perfidia

Cry

Sixteen Tons/Chain Gang

The Catering Drill/She Loves You

The Golden Cardigan

Catch A Falling Star

Caribbean Plaid

Heart and Soul

Mercury

Lady Of Spain

Scotland The Brave

Shangri-La/Rags To Riches

Before Love (Underscore)

Love Is A Many Splendored Thing

ANNIVERSARY SONG Written by Al Jolson and Saul Chaplin. ©MCMXLVI Mood Music Co. Inc., New York New York. Copyright renewed. Worldwide Copyright Administrator: Shapiro, Bernstein & Co., Inc. Used by permission. CATCH A FALLING STAR Written by Paul Vance and Lee Pockriss. Used by permission of Emily Music Corp. CHAIN GANG Written by Sam Cooke. Published by Abkco Music, Inc. Used by permission. CRAZY 'BOUT YA BABY Written by Pat Barret and Rudi Maugeri. Used by permission of Wanessa Music Production, Co. CRY Written by Churchill Kohlman. ©MCMLI Shapiro, Bernstein & Co., Inc., New York, NY Copyright renewed. Used by permission. DAY-O Written by Erik Darling, Bob Carey and Alan Arkin. Used by permission of Cherry Lane Music Publishing Co., Inc. DREAM ALONG WITH ME Written by Carl Sigman. Used by permission of Major Songs Co. GOTTA BE THIS OR THAT Written by Sonny Skylar. Used by permission of Music Sales Corporation (ASCAP), copyright owner. HEART AND SOUL Written by Hoagy Carmichael and Frank Loesser. Used by permission of Famous Music Corp. JAMAICA FAREWELL Written by Lord Burgess. Used by permission of Cherry Lane Music Publishing Co., Inc. KINGSTON MARKET Written by Irving Burgie. Used by permission of Cherry Lane Music Publishing Co., Inc. LADY OF SPAIN Written by Robert Hargreaves, Tolchard Evans, Stanley J. Damerell and Henry Tilsley. Used by permission of Sam Fox Publishing Co., Inc. LOVE IS A MANY SPLENDORED THING Written by Paul Francis Webster and Sammy Fain. Used by permission of EMI Miller Catalog Inc. MAGIC MOMENTS Written by Burt Bacharach and Hal David. Used by permission of Famous Music Corp. MATILDA Written by Harry Thomas. Used by permission of MCA Music Publishing, a division of MCA Inc. MOMENTS TO REMEMBER Written by Al Stillman and Robert Allen. Used by permission of Larry Spier, Inc. NO, NOT MUCH Written by Al Stillman and Robert Allen. Used by permission of Kitty Anne Music. PAPA LOVES TO MAMBO Written by Al Hoffman, Dick Manning and Bix Reichner. ©MCMCLIV Shapiro, Bernstein & Co., Inc. New York, NY. Used by permission. PERFDIA Written by Milton Leeds and Alberto Dominguez. Used by permission of Peer International Corp. RAGS TO RICHES Written by Richard Adler and Jerry Ross. Used by permission of Major Songs Co. SHANGRI-LA Written by Carl Sigman, Matt Malneck and Robert Maxwell. Used by permission of EMI Robbins Catalog Inc. SHE LOVES YOU Written by John Lennon and Paul McCartney. Used by permission of Gil Music Corp. SING TO ME MR. C Written by Charles Ray. Used by permission of Roncorn Music Company. SIXTEEN TONS Written by Merle Travis. Used by permission of Unichappel Music Inc. TEMPTATION Written by Arthur Freed and Nacio Herb Brown. Used by permission of EMI Robbins Catalog Inc. THEME FROM THE GOOD, THE BAD, AND THE UGLY Written by Ennio Morricone. Used by permission of EMI Unart Catalog Inc. THREE COINS IN THE FOUNTAIN Written by Sammy Cahn and Jule Styne. Used by permission of WB Music Corp. and Chappell & Co. UNDECIDED Written by Sid Robbin and Charles Shavers. Used by permission of MCA Music Publishing, a division of MCA Inc. SH BOOM Published by Warner/Unichappel Music, Inc.

DEDICATION *Forever Plaid* is dedicated to the "good guys"; to the guys who wheeled the projector carts for the AV club; to the guys who saved their allowance to give their parents a special night on the town for their anniversary; to the guys who carried an extra handkerchief; to the guys who never went beyond first base, and if they did, they didn't tell anyone. We Salute You!

Artistic team

COLIN ANDERSON

(Lighting Crew/ Spot Op, Forever Plaid)



NICK BOISVERT

(Scenic Charge/Assistant Scenic Designer)

(he/him) is a second-year Scenic Design M.F.A. candidate and is very excited to be working with IUST. Most recently he worked as the Properties Master for IU's Spring

production, *Pipeline*. Nick hails from Phoenix, Arizona's Grand Canyon University and is very excited to experience a new atmosphere of ideas.



ASHLEY CHRISTENSEN

(Head Electrician/ Programmer)

is a second-year M.F.A. candidate from Lake Oswego, OR with a B.A. in Theatre from the University of Oregon. Recent credits include: *Path of Miracles* with The

Oregon Bach Festival, *L'italiana in Algeri* with the UO Opera Ensemble and *Colonialism is Terrible, But Pho is Delicious* with Oregon Contemporary Theatre. She is excited to expand her horizons and collaborate with new people, places and ideas in Indiana.



ASH COSSEY

(Props Manager)

(they/them) is a second-year M.F.A. Scenic Design candidate from Denver, CO. They graduated from Metropolitan State University of Denver with a B.F.A. in Applied Theatre Technology and Design.

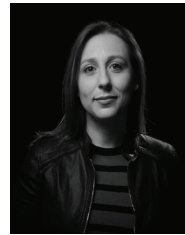


BRIAN DAVIS

(Carpenter/Run Crew/ Changeover Crew)

An M.F.A. Acting candidate at IU, hailing from Miami, FL, Brian has worked in the behavioral analysis field with children of all ages

since 2016, where he discovered his passion for storytelling and the performing arts. After earning his B.S. in Recreational Therapy from Florida International University, Brian is excited to blend his unique work experiences with his passion for the stage, collaborating closely with fellow artists.



LAUREN DIESCH

(Associate Director, Forever Plaid)

(she/her) is originally from Pittsburgh, but lived in Minneapolis for 11 years. There she worked for the award-winning CLIMB theatre as the Director of

Education/Associate Artistic Director. Additionally, directed, performed, and taught for numerous Twin Cities companies including: The Children's Theatre Company, Park Square Theatre, Theatre Coup d'Etat, Open Window, Gadfly, Chameleon Theatre Circle, Umbrella Collective, and Theatre Unbound. Lauren received her B.A. in Theatre Arts from the University of Pittsburgh and received her M.F.A. in Directing from Indiana University.

JOCYLON EVANS

(Lighting Crew/ Spot Op, Forever Plaid)

ROWAN FARABAUGH

(Lighting Crew/ Board Op, Forever Plaid)



SPENCER WILKES FIELDS

(Dramaturg/Marketing Assistant, *Dial M for Murder*)

(he/him/his) is a dramaturg who is currently pursuing his M.F.A. in Dramaturgy at Indiana University. Spencer recently completed his undergraduate studies at

Brigham Young University, where he played a crucial role as the dramaturg for their Microburst Theatre Festival. Beyond his work on new plays, Spencer has also made significant contributions as a dramaturg for a diverse range of productions, including: *Fiddler on the Roof*, *A Midsummer Night's Dream*, Mary Zimmerman's *Metamorphoses* and *The Shape of a Girl*.



SOPHIE FRANK

(Stage Manager, Forever Plaid)

is a Junior here at IU from Indianapolis, Indiana and working toward a B.A. in Theater and Drama with a concentration in Stage Management. For IU, she

has worked on: *Cabaret* (Stage Manager), *Something Rotten!* (Assistant Stage Manager), *Everybody* (Assistant Stage Manager), *Carrie: The Musical* (Production Assistant). For IUSt: *Into the Woods* (Assistant Stage Manager) and upcoming: *Forever Plaid* (Stage Manager). For University Players: *Falsettos* (Stage Manager).



GRANT GOODMAN

(Fight Director/Vocal Coach, *Dial M for Murder*)

Grant is an actor, director, playwright and fight choreographer with thirty years of professional experience. As an actor he appeared opposite F.

Murray Abraham in the national tour of *The Merchant of Venice* and has played leading roles at such theatres as Lincoln Center, Theatre for a New Audience, The Guthrie Theatre, Yale Repertory, Shakespeare Theatre

Company (DC), Chicago Shakespeare Theater, The Old Globe, Actors Theatre of Louisville, Hartford Stage, Court Theatre (Chicago), Cincinnati Playhouse in the Park, Cleveland Play House, Pioneer Theatre Company, Phoenix Theatre Company, PlayMakers Repertory, Indiana Repertory, Syracuse Stage, Milwaukee Repertory, People's Light (Philadelphia), Shakespeare Theatre of New Jersey, Arizona Theatre Company, Red Bull Theater and the Utah, Illinois, Notre Dame, Indianapolis, Milwaukee, Austin and Kentucky Shakespeare Festivals among many others. Film & Television work includes: *Chicago Fire*, *As the World Turns*, *Sex and the City*, *Sleepers* among others. Grant is a graduate of NYU's Tisch School of the Arts.



DJ GRAY

(Choreographer)

is a performer and choreographer with Broadway and Off-Broadway credits. On Broadway, she was the Associate Choreographer for the Tony Award-winning

25th Annual Putnam County Spelling Bee, Tony-nominated *Xanadu*, (also staging the National Tours and commercial engagements) and *Sondheim on Sondheim*. Regional credits include: Barrington Stage, North Shore, Northern Stage, Florida Studio Theatre, Candlelight Theatre, Moonlight Stage productions, McCoy/ Rigby Entertainment and Musical Theatre West. For TV, DJ choreographed for Stephen Colbert's "*Christmas Special*" and Colbert's "*Dance Party*" and for NBC, *The Year Without a Santa Claus*, as well as several episodes of "*The New Electric Company*".



NICOLE HIEMENZ

(Wardrobe Supervisor/ Stitcher)

(they/them) is a recent graduate in Costume Design from Durham, NC. They graduated from NC State University with their B.S. in Fashion

and Textile Product Development. For IU Theatre (Costume Design): *Gross Indecency* (KCACTF Region 3 Award for Excellence in Costume Design), *Journeys of Joy: Leave Only Footprints and Interface of Inscription*, *Uncle Play*, *Sueño* (Assistant Costume Designer), *The Threepenny Opera* (Wardrobe Supervisor).



ANDREW HOPSON

(Sound Designer)

As a composer and sound designer, Andrew has designed or written the scores for shows at such theatres as the Oregon Shakespeare Festival, Utah Shakespearean Festival,

Actors Theatre of Louisville, American Repertory Theatre, American Players Theatre, Cincinnati Playhouse, Pioneer Playhouse, Cleveland Playhouse, Victory Gardens, Harvard University, and the Indiana Repertory Theatre, where he was resident sound designer for five years. In 2004, his New York debut *Trying* was rated one of the best Off-Broadway shows of the year. In film, he has scored the documentaries, *Birth of Legends*, *The Battle of Comm Avenue*, *Hockey's Greatest Era 1942-1967*, *The Frozen Four* and *Utah's Olympic Legacy*. He has produced, engineered or performed on over 40 CDs, ranging from stories for children to collections of modern American piano works. He is a member of United Scenic Artists, local 829 and USITT.



MADLINE TAGUA-HORNE

(Stage Manager, *Dial M for Murder*)

(she/her) is from Fishers, IN and a recent graduate of Indiana University with a B.S. in Arts Management with minors in Law & Public Policy, Theatre,

and Spanish. Madeline is excited to serve as the stage manager of *Dial M* along with the amazing cast and crew. Madeline will be attending the IU McKinney School of Law this Fall to study Arts & Entertainment Law to represent minorities in the industry. Her past credits for IU Theatre include: *Natasha, Pierre, and the Great Comet of 1812* (ASM), *Into the Woods* (ASM), *Orlando* (ASM), and the World Premiere of *Vox-Pop! A Post Democratic Musical* (SM). She would like to thank her parents, Trish Hausmann, and the forever friends she has been able to make in the Stage Management program: Sparrow Mansfield, Rachel Petersson, Sophie Frank, Molly Lenig, Taylor Blum, Sadie Maw, and Olivia Johnson.



OLIVIA JOHNSON

(Assistant Stage Manager, *Dial M for Murder*)

is a second-year M.F.A. acting student. She received her B.A. in theatre from Dillard University, home to the oldest HBCU theatre program in the country.

Olivia is excited to get back into technical theatre this Summer through her role as Assistant Stage Manager of *Dial M For Murder*. This season, Olivia can be seen in Indiana University theatre's upcoming productions. Some of her past credits include: *Pipeline* (Nya), *Yellowman* (Alma), and *The Skin of Our Teeth* (Mrs. Antrobus). Olivia is grateful to have worked alongside her Stage Manager, Maddy, who helped her persevere through the Summer.



MOLLY LENIG

(Assistant Stage Manager, *Forever Plaid*)

(she/her) is an upcoming Senior from LaPorte, IN. She is pursuing a degree in Theatre & Drama with a concentration in stage management and a minor in fitness instruction. This

past school year, Molly had the honor of being an assistant stage manager for *Orlando* and the production assistant for *Vox Pop!* She is also a part of IU's premier all female a cappella group, Ladies First. Molly would like to thank Maddy-Tagua Horne and Rachel Peterson for their endless support and wish them luck on their future endeavors. She would also like to express her gratitude to Lauren Diesch for the amazing wisdom and kindness she has given Molly over the past year. Molly hopes everyone has an amazing time with the Plaids!



NANCY LIPSCHULTZ

(Dialect Coach, *Dial M for Murder*)

has been a teacher of theatre for thirty one years. She has been on faculty at Cornell University, Ithaca, NY, Wayne State University in Detroit, Michigan State University and here at

Indiana University since 2005. Nancy has worked as a dialect and voice coach at: Meadow Brook Theatre, Indiana Repertory Theatre, Chicago Shakespeare

Theatre, New York City Opera at Michigan Opera Theatre, National Tour of *Kiss Me Kate*, Jacobs School of Music and Maurer School of Law. In 2018 Nancy became a Patsy Rodenburg Associate master teacher. She is also a professional actress and has worked in New York, Chicago and Internationally. She is a member of: Screen Actors Guild, Actors Equity Association, AFTRA and VASTA.



RUSSELL LONG
(Lighting Designer)

is happy to return to IU theatre and contemporary dance. He is the current Lighting Specialist at the Musical Arts Center at the Jacobs School of Music. His most recent design

credits include: *Newsies*, *Eugene Onegin*, *Autumn Song*. Other regional credits include: *Lunch Bunch*, *45 Seconds from Broadway*, *The Music Man*, *The Merry Widow*, *Pippin*, and the national tour of *We Outside*. He has also worked as the lighting supervisor/resident lighting designer for Aspen Music Festival and School, where he designed lights for *Uncommon Ritual*, *iDe Colores!*, and *Mathew Whitaker*. Originally from Southern Arizona. Long studied at Northern Arizona University and has worked with Arizona Theatre Company, Peaks Productions, University of Arizona Opera, Aspen Opera, and Vail Ballet Festival. He earned an M.F.A. in lighting design from the IU Department of Theatre, Drama, and Contemporary Dance.



KATE LOPEZ
(Costume Designer, *Dial M for Murder*)

is a second-year in the M.F.A. costume design program. Kate graduated with her B.A. from California Polytechnic Institute - Pomona in

Technical Theatre Design with a focus in Costume Design. Her credits include: *The Thanksgiving Play*, *As You Like It* (Cal Poly Pomona), *Private Lives* (Independent Shakespeare Company), and *Pipeline* (Indiana University - Bloomington).



REUBEN LUCAS
(Scenic Designer)

His scenic and projection designs have been seen onstage at the Indiana Repertory Theatre, Denver Center Theatre Company, National Theatre Conservatory, Theatre

Aspen, Indiana Festival Theatre, Curious Theatre Company and others. Before Indiana University, he was a Chicago-based freelance associate scenic and exhibit designer on museum and theatre projects at various national companies. Additionally, he served as the resident scenic design associate at the Denver Center Theatre Company for four years. Reuben received his M.F.A. from University of Illinois at Urbana-Champaign and is a member of United Scenic Artists Local 829.



BRANDON MAGID
(Music Director)

(he/him) is a music educator, music director and vocal coach and holds a Master of Science in Music Education from the Jacobs School of Music at Indiana University and Bachelor of Arts degrees in Music and

in Theatre from Loyola University Chicago. Credits include Broadway: *Godspell*; Off-Broadway: *City Center Encores!*, York Theater; Regional: American Repertory Theater, Barrington Stage, Goodspeed Musicals, and Paper Mill Playhouse. Currently completing his doctoral degree in Music Education at Indiana, Brandon looks forward to joining Ohio Northern University this Fall as Assistant Professor of Musical Theatre and Choral Director. www.brandonamagid.com



FRANKIE MARTINEZ
(Technical Director)

is a second-year from Chapel Hill, NC, in the Theatre Technology M.F.A. program. So far she has been a carpenter on all of this year's productions, including: *Pipeline*, *Vox Pop!*, *Orlando* and *Cabaret*. Frankie

graduated in May from East Carolina University. There she was the Technical Director for *Pride and Prejudice* and *Intimate Apparel*, as well as the Assistant Technical Director on *Pippin* and *Head Over Heels*. Frankie would like to thank her professors and fellow grads for supporting her and hopes you enjoy the show.



JENNY MCKNIGHT

(Director, Dial M for Murder)

is an Assistant Professor in the Acting/Directing area beginning her eighth year at IU. Prior to joining the faculty here,

Jenny taught at The University of Arkansas and Oklahoma City University, and was a Guest Artist at Wabash College and in the Steppenwolf Theatre Arts Exchange Program. For IU Theatre, she's directed: *The Tragedy of Julius Caesar, Only Child, Little Women, Tiger Beat, Waycross, Bowling for Beginners, Measure for Measure, and The 39 Steps*. She also serves as Intimacy Choreographer and Consultant for departmental productions. Regionally, Jenny has directed *Measure for Measure* at Illinois Shakespeare Festival, *Leipzig* at Jewish Theatre of Bloomington and *The Lion, the Witch and the Wardrobe* at Cardinal Stage. A proud union member of both Stage Directors & Choreographers Society and Actors' Equity Association, Jenny has enjoyed opportunities to perform at Chicago-area and regional theatres including: The Goodman Theatre, Steppenwolf Theatre, Victory Gardens, Northlight Theatre, Remy Bumpoo, Actors Theatre of Louisville, Indiana Repertory, Milwaukee Repertory, Kansas City Repertory, Clarence Brown Theatre, and Arizona Theatre Company, among many others.



ADAM MOHRS

(Carpenter/Run Crew/Changeover Crew)

(he/him) is a recent B.A. graduate at IU pursuing a major in Theatre & Drama with a focus in acting and directing, along with a minor in Business.

At IU, he previously worked on *Sueño* (Stage hand), *Cabaret* (Spot OP), and *The Winter's Tale* (Polixenes). Regional Theatre: *Heathers* (Kurt), *Carrie* (Billy Nolan), *Willy Wonka* (Willy Wonka), and more. Adam is from Munster, IN, and is pursuing a career in acting.



JIEUN OK

(Sound Tech/Board Op/Strike Crew Generalist)

Jieun Ok is a Korean composer, arranger, and orchestrator who has worked on various projects across jazz, classical, contemporary, and game music. Her works

have been performed by Trio Achim, Jeju Wind Orchestra, Indiana University Wind Band, Cheongju Philharmonic Orchestra, Flasic Game Orchestra, Seoul Chorale Society, Busan Conductor Chorus, and Busan Harmony Chorus. After earning her bachelor's degree in Composition from Yonsei University in Seoul, South Korea, she is currently pursuing her master's degree in Composition at the Jacobs School of Music at Indiana University.

JOCELYN PAYNE

(Stitcher/Wardrobe Crew/Daytime Maintenance)



SHERIDAN SCHREYER

(Dramaturg/Marketing Assistant, Forever Plaid)

(she/her) is a theatre artist and scholar whose work explores affective movement-based dramaturgies and intimacy as performance.

She is a Master of Fine Arts in Dramaturgy candidate at Indiana University Bloomington, and she holds a Bachelor of Fine Arts in Music Theatre with a Minor in Psychology from The Hartt School at The University of Hartford. Before IU, she worked professionally as an actor, administrator, and producer at theatre organizations across the Northeast. Sheridan has also pursued additional training with Intimacy Directors and Choreographers, Theatrical Intimacy Education, and the Association of Mental Health Coordinators.



RACHEL SHEARON

(Assistant Technical Director/ Carpenter)

Rachel graduated in May as an M.F.A. Theatre Technology candidate. She was the Technical Director for the IUJST 2022 and 2023 season. Recently, she has been the Technical Director

for *Pipeline, Something Rotten!, Natasha, Pierre and the Great Comet of 1812, Uncle Play* and *Bowling for Beginners*.

**BRI STONEBURNER**

(Sound Tech/Audio Mix Engineer/Strike Crew Generalist)

(she/they) is a Junior studying a double major in Film, TV and Digital Production as well as Theatre with a concentration in Audio.

They are excited to be back on Mainstage for another production. Previously at IU, they have done: *Vox Pop!* (mixer), *Orlando* (asst. sound designer), *Something Rotten!* (mixer), *Why Liliya Why* (Sound Designer), and *Natasha, Pierre, and The Great Comet of 1812* (mixer). For IUJST they have done *Into the Woods* (mixer).

**CEE-CEE SWALLING**

(Costume Designer, *Forever Plaid*)

is a Costume Designer & Technologist with her M.F.A. in Costume Design & Technology from the University of Virginia. Some of her previous employers include: the Richmond

Ballet, Arena Stage, The American Shakespeare Center, the Shakespeare Theatre Company, Ford's Theatre, the John W. Engeman Theatre, The Washington National Opera, and the Washington Ballet. She holds her B.A. in Literature and Theatre from American University in Washington, DC.

**ANSLEY VALENTINE**

(Director, *Forever Plaid*)

Ansley Valentine is a professional director and choreographer for the theatre and musical theatre and an educator with experience teaching professionally at the collegiate level and in

both public and private performing arts high schools. Ansley is currently a proud member of the Stage Directors and Choreographers Society (SDC).

**BETH WALLACE**

(Cutter/Draper)

(she/her) is a second-year Costume Technology M.F.A. Candidate from Elkhorn, Wisconsin. Previously she got her bachelor's degree from the University of

Wisconsin-Platteville where she was selected to be a part of the university's Summer Undergraduate Scholars Program. Some of her favorite shows that she has worked on in the past include: *Dr. Faustus, I Hate Hamlet, Matilda, Everybody, Gross Indecency, Winter's Tale, Why Liliya Why, 1970's Sex Comedy, and Natasha, Pierre and the Great Comet of 1812*. She would like to thank her family and friends for their continuous love and support.

**GRANIA WHELAN**

(Stitcher/Wardrobe Crew/Daytime Maintenance)

(they/them) is a recent graduate with a double major in English and Theatre. Past credits include: *Bowling for Beginners* (Ensemble),

The Well of Horniness (Ranger/Judge), *Twelfth Night* (Valentine/Second Officer/Priest), *More Perfect Places* (Ensemble Member 6). For IU Theatre: *The Welkin* (Ann Lavender) with the Richard Burton Company, and the IU Theatre Independent Projects *I Love My Friends* (Kira) and *Fishbowl* (Francine). Grania is from Bloomington, IN.

SPECIAL THANKS to our 2022–2023 and 2023–2024 season Associate Producers

The contributions of Associate Producers directly fund an IU Theatre production of the donor's choice. As an associate producer, you will help directly support the cost of a production's costume, scenic, lighting, sound and projection design.

Your name will be featured in our programs and all curtain speeches. You will also enjoy benefits as year-round members of Theatre Circle, an organization founded to promote and encourage the study and practice of theatre arts in the Department of Theatre, Drama and Contemporary Dance and an awareness of theatre throughout the community.

For more information, please scan the QR code, pick up a Theatre Circle brochure in the lobby, or contact David Tracy at davtracy@iu.edu

You can also visit the Department of Theatre, Drama, and Contemporary Dance website at theatre.indiana.edu and select the Theatre Circle link under Alumni+Giving.



UP NEXT AT IU THEATRE & DANCE:

Two teenagers brought to America as children become one another's sanctuaries from the harsh realities of a world changed by the recent events of 9/11.

A promotional poster for the play 'Sanctuary City'. The background is a black and white photograph of a person's hands holding a folded American flag against a brick wall. The text is overlaid on the left side of the image.

Ψ THEATRE & DANCE
SANCTUARY CITY
Directed by Ansley Valentine
By Martyna Majok
SEPT 27–OCT 5
WELLS–METZ THEATRE

IU Summer Theatre Fund contributions

Charles and Katherine Aiken
Diana and Rodger Alexander
Carroll P. Britch
William K. Castellan and Angela D. Huxford
Joan H. Caulton
Kyle and Dana Cattani
John and Susan Cronkhite
Samuel Davis
Christopher and Claire Dippel
David and Susanna Fennema
Danita and Robert Forgey
Jacqueline and William Gilkey
Margaret Goergen-Rood and Vernon Rood
Jennifer and Laurence Gordon
Edwin H. Greenebaum
Audrey and Kenneth Heller
Steven L. Hendricks
Carter and Kathleen Henrich
Mariann E. Hosler
Lawrence D. Klein
Robert and Sandra Kleymeyer
Ronald Kovener
Mary M. Kroll
Harlan Lewis and Doris Wittenburg
Priscilla and William Manwaring
Thomas C. Mazur
Richard N. and Maribeth A. McKaig
Sandra Schultz Moberly and Stephen Moberly
Jeffrey Mouldrem
Cyndi and Dale Nelson
Carol and Wade Peacock
Joyce and Philip Probst
Richard J. Rose
August and Virginia Semenick
Jake Scott
Curtis and Judith Simic
Erdine M. Simic
David Smith* and Lucy Smith
George and Patricia Smith
T. Joe Tower
Maria Visus
Steven and Susan Waggoner
Terry and Sharon Williams
Deb Wilson
John D. Wilson

**Guest Artists and Consultants
are made possible by the
Lee and Deb Norvelle Visitors Fund**

* Denotes donors who have passed away, but whose gift continues to benefit the department and its students.

IU Theatre & Dance supporter contributions

CONTEMPORARY DANCE FUND CONTRIBUTORS

Lillian R. Feldman-Hill
Jennifer L. Gray and Alan S. Bradley
Deborah C. Galvin
Robert J. Hamm Jr. and Gwendolyn A. Hamm
Joy C. Johnson and Jerry L. Johnson J.D.
Allen Hahn and Karen Keagle
George and Mary Korinek
Rose M. Krueger
Laura Judson and Nikolaus Miller
Harlan Lewis and Doris Wittenburg
Meghan McGill
Miah and Jonathan Michaelsen
Elizabeth Jo Monnier
Dennis W and Lynette A. Organ
Linda Pisano
Susan B. Glenn-Salerno and
Richard P. Salerno
Mary Strow
Sheila A. Ward, Ph.D.

JANE FOX FUND CONTRIBUTORS

Jane Fox
Catharine and Thomas Buck
Jacqueline and Stephen Frew
Gwendolyn and Robert Hamm Jr.
Rose Marie Krueger
Christina Strack

TED JONES STUDENT TRAVEL FUND CONTRIBUTORS

Katherine M. Aiken and Charles
C. Aiken
Louray G. Cain
Lauren Hausmann
Marianne Hausmann and William
Hausmann
Ted W. Jones
Jane Pennell McIntosh
Amy N. Osajima
Eleanor Owicki
Lea Plut-Pregelj and Vladimir N. Pregelj
Doris F. Wittenburg and Harlan L. Lewis

THEATRE & DRAMA FUND CONTRIBUTORS

Rita Murray Anderson and Robert D. Anderson
Nancy Baird
Sarah J. Baumgart and William R. Lozowski
Thomas M. Baydala
Gregory G. Bernet
Judith Biersdorfer
Josiah A. Brown
Hans Buehler
Joan M. Capella
Hoagy B. Carmichael

Walter D. Carroll
Ashley M. Chilla
Wendy W. and Thomas P. Collins
Allison C. Conrad and Donald W. Conrad
Mary and Sheldon Cooper
Georgia R. and Mark K. de Araujo
Kimberlee M. Demers and Alan Demers
Diane T. Dickinson Patrick
Claire and Christopher Dippel
Gresdna A. Doty, Ph.D.
Priscilla J. and John G. Duman
Sean M. Dumm
Jacqueline and Richard Dunham
Susanna C. and David H. Fennema, Ph.D.
Fennema Family Trust
Harriet and William Fierman
Laurette S. Frazier
Barbara Hatcher Gibler
Elizabeth and Steve Hass-Hill
Thomas V. Hinshaw
Scott Hogsed
Todd and Lynn Honderd
Michael D. Huber
Elizabeth and David Ihlenfeld
Rose D. Krakovitz
Laura Judson and Nikolaus Miller
Linda S. Dunlevy Mitchell
Robert J. Kelly, III and Judith R. Kelly
Joe D. King
Douglas and Kay Long
Linda A. Longhofer
The Honorable P.A. Mack, Jr.
Tom Mazur
Richard and Terry McCall
Laura K. McClellan
Marvin D. Moody, Ph.D.
Lawrence Myers, Jr.
Cyndi and Dale Nelson
Christina D. Ondrik
Robert R. and Donna L. Ormiston
Rhoda and C.K. Peters
Linda Pisano
Phil and Joyce Probst
David L. Rinear
Donna Snow Robinson
Corey Rosenberg
Wendy Rubin
Curtis and Judith Simic
Patricia B Smith Rev Trust Peter F Smith Rev Trust
Patricia F. and George E. Smith
Patricia J. Smith
Lynne Perkins Socey and Matthew Socey
Diane J. Spofford
Janice and Walter Stewart
R. Brent Wagner
June E. Weiland
Doris Wittenburg and Harlan Lewis
Wahl Family Charitable Trust
Sharon L. and D. Terry Williams
Donna and Richard Wolf
Jo A. Zirkle

* Denotes donors who have passed away, but whose gift continues to benefit the department and its students.

Department awards, fellowships, scholarships, and endowments

Bright Family Theatre, Drama, and Contemporary Dance Fund

Anne and Jim Bright

Catherine Feltus Preston Scholarship

Catherine Preston Trust
Charles R. Leinenweber

Betty and Charles Aidman (Spoon River) Scholarship/Fellowship

Betty Aidman
Charles Ogilvie Jr.
C.H. Ogilvie Jr Revocable Trust

Betty and Charles Aidman (Spoon River) Scholarship/Fellowship Current Use

Charles Ogilvie Jr.
C.H. Ogilvie Jr Revocable Trust

B.F.A. Scholarship in Musical Theatre

Anonymous

Colleen J. and W. Keith Alexander Scholarship

W. Keith Alexander

Cynthia Dewees Nelson and Dale C. Nelson Musical Theatre Scholarship

Cyndi D. and Dale C. Nelson

David S. Hawes Award

Betty Anne Hawes
Maile Jones
Dan Jones

Department of Theatre, Drama, and Contemporary Dance Fellowship

Anthony E. Courtade, Ph.D.

Donnelly-Brown Fund for Theatre & Drama

Benita Gail Brown
Brian Thomas Donnelly

Dr. James F. Elrod Scholarship in Theatre & Drama

James F. Elrod

Featheringill Theatre and Drama Scholarship

Jack L. Featheringill

Fontaine Syer Directing Fellowship in Theatre

Susan Greenberg
John Rusher and
Mary K. Nash Rusher
Henry Woronicz

Foster Harmon Graduate Fellowship in Theatre

L. Foster Harmon

Foster Harmon Undergraduate Scholarship in Theatre

L. Foster Harmon

Frank and Becky Hrisomalos Scholarship in Theatre & Drama

Becky Hrisomalos
Katy Bigge Kestner Fund
Richard and Alicia Lytle

George Pinney Musical Theatre Scholarship

Anne and Jim Bright
Paul Goldberg
Caroline Kennedy
Kay Long
P.A. Mack
Jerry and Lucy McIntosh
Marilyn Norris
Ilene and John Reid
Sue Waggoner

Harlan L. Lewis and Doris F. Wittenburg Scholarship in Theatre and Drama

Doris F. Wittenburg
and Harlan L. Lewis

Harlan L. Lewis Family Scholarship

Harlan L. Lewis and
Doris F. Wittenburg

Harv and Connie Hegarty Theatre and Drama Production Fund

Harv and Connie Hegarty

Helen Sarah Walker Scholarship

Michael L. Walker
Baker Hughes Foundation
Cory and Margaret Baumhardt
Irwin and Lois Jacobs

Howard Jensen Endowment

Howard J. Jensen, Ph.D.
Thor R. Steingraber

IU Summer Theatre Fund

Robert K. and Danita H. Forgey

Jay Mark Scholarship in Theatre & Drama

Alvin Goldstein

Joyce and Jim Grandorf Theatre, Drama, and Contemporary Dance Fund

Joyce and Jim Grandorf

Katy Bigge Kestner Fund

Elmer N. Kestner, III
Nick Kestner

Kimberly S. Hinton Memorial Scholarship in Contemporary Dance

Bridget Balint
Jennifer Gray and Alan Bradley
Madison Colquette
Eileen Curley
Angela Gast
Lois and Richard Gast
Nancy Gray McKelvey and
Raymond McKelvey
Suzanne and Keith Hinton
Steven Jarosz
Laura and Nikolaus Miller
Reuben Lucas
Eleanor Owicki
Amanda and William Peterson
Linda Pisano
Bret Popper
Karyn Rahn and Bradley Strode
Cat Richards
Elizabeth and John Shea
Jamie and Jonathan Stuckey

Lee Martin Scholarship

Nicole Kelgg
Bryant H. and Maria M. Owens
Linda M. Pisano
Kaityn L. Smith
Bhavna Vasudeva
Alexandra Webb

Lee and Deb Norvelle Fund

Lee Norvelle, Ph.D., LL.D

Lora C. Shiner Memorial Scholarship

Lora Shiner Foundation

Marion Bankert Michael Student Assistance Fund in Theatre and Drama
R. Keith Michael, Ph.D.
and Marion B. Michael

Murray and Sue Robinson Scholarship
F. Murray Robinson, C.P.A.
and W. Sue Robinson

Musical Theatre Undergraduate Scholarship
Clinton D. Roeth-McKay, Ph.D.
and Peter J. Roeth-McKay

Nota Scholl McGreevey Scholarship
John and Nota McGreevey

Peglow-Blessing Family Performing Arts Scholarship
Sue Ellen Peglow

Ralph Collins Memorial Lectureship
David Collins
Dorothy Craig Collins
Wayne Craig

Richard L. Scammon Award
Bryce Broughton
Barbara Lockard-Zimmerman

Robert Preston Scholarship
Catherine Preston Trust
Charles R. Leinenweber

Rosemary R. Schwartz Scholarship
Patricia J. Redens Wrege

Suzanne M. Collins and Charles A. Pryor Scholarship
Suzanne M. Collins and
Charles A. Pryor

Student Showcase Fund
Stephen C. and Sandra
Schultz Moberly
Curtis R. and Judith E. Simic
Samuel R. and Patricia S. Ardey
Kenneth M. Tewel, Jr., M.D.
and Brenda M. Tewel
Jeffrey L. and Pamela Jones
Davidson, J.D.
David J. and Carolyn M.
Emmert, Ed.D.
Anne and Jim Bright
Sue Huffman and
Winston G. Shindell
George B. Pinney
and Scott B. Jones
Martin J. Kaplan, M.D.
and Linda K. Kaplan

Doris F. Wittenburg
and Harlan L. Lewis
Dale C. and Cyndi D. Nelson
Stephen C. and Jo Ellen Ham
Anne T. Fraker and
Richard J. Rose, Ph.D.
Dr. Kenneth M. Tewel MD
& Brenda M. Tewel JT TEN
Anne Fraker Revocable
Living Trust
Martin and Linda Kaplan
Revocable Trust
Ruth Albright
August Semenick
Carolyn A. Bailey
Robert W. Galm
Diana Dehart Lehner
Athena R. Hrisomalos
John D. Hobson
James C. Craig, Ph.D.
Judith L. Schroeder
Iris F. Kiesling
Terry L. Labolt
Virginia Semenick

Theatre Circle Scholar Award
Members of Theatre Circle

Theatre Circle Fund
Earl F. Luetzelschwab
and Deborah Burkhart

Theatre and Drama Center Endowment
Carl F. Kiehler

Theatre & Drama Production Endowment
Phyllis J. Horton
Linda M. Pisano

Theatre, Drama, and Contemporary Dance Scholarship
D. Terry Williams, Ph.D.
and Sharon L. Williams
Mike Knight

Theresa Anne Walker Scholarship
Michael L. Walker

Fran Snygg Endowment
Marianne and Charles E. Snygg
Gertrude and Seymour Alberts
Anita Aldrich Ed.D.
Anitra Bareikis
Patricia E. Biddinger
Emily Ann Bogard
Leon and Roberta Brauner
James P. Burling II
Robert E. Burton
Marcia M. Busch-Jones
Jean E. Campbell
Ann M. K. and Thomas R. Carter Ph.D.
Orchard Close

Evelyn A. Davies Ed.D.
Deborah A. Freund Ph.D.
Robert L. Gluckstern
Janet Hamburg
Patricia Dain Haskell
William H. Hays III
Robin Herrington-Bowen
Rachel and David M. Hertz
Jo An Huff
Peter P. Jacobi
Thomas J. Knesner Ph.D.
Rachel Lampert
Bernice A. Pescosolido Louise
Rebecca Rarick
Nancy and James W. Reeves
Edward and Sydney Regan
Robert and Sandra Reiberg
Carlos Rodriguez
Geneva B. Scriggins
Evelyn S. Turner
Allison and Thomas Walsh
Byron P. Wheeler
Mark F. Wheeler and Jan Wheeler Ph.D.

Jason W. Stradtman Prize
Alan Airth
Byron and Kimberly Antillon
Johnston Atoll
Dawn and Paul Barrera
Ali and Robert Bartholomew
Darlene Bishop
Donna Colwell
Bruce Creamer
Donald and Patricia Crouse
Kathleen Galindo
Adelita Garza
Arlene and Martin Glassman
Diane and Frederic Hite
Lucena A. Hocking
Denis and Robin LaBonge
Anthony and Karin Lekas
Dick and Karen Lemen
Gael and Glenn Libby
Fred and Peggy Lynn
Judith and William Maisel
Sharon Merz
Marybeth and Robert
Michel
Susan Moore
Elaine Peterson
Robert Radus
Joanne and Paul Reynolds
Martha and Robert Santos
Sharon Seymour
Martin and Charlotte Stradtman
Dennis and Sharon Tase
Howard and Joan Thompson
Catherine and William Titterud
Andrew and Rena Wellman
Lynda Wicks
Audrey and Robert Windsor

Theatre Circle

Theatre Circle was founded in 1978 to encourage the study and practice of theatre arts at IU and to promote an awareness of IU Theatre throughout the community. Theatre Circle members enjoy a variety of benefits, including

acknowledgment in all IU Theatre programs; emailed information about all performances; glimpses behind the scenes; exclusive talks by directors, designers and theatre scholars; special event invitations; and much more.

SUSTAINING BENEFACTORS

(Gifts of \$5,000 and above)

Rodger & Diana Alexander
Joint Trust

Teresa and John Ayres
Benita Brown and

Brian Donnelly
Jean* and Doris Creek
Community Foundation of
Bloomington & Monroe
County

Connie and Harv Hegarty
Becky and Frank* Hrisomalos
The Lawrence W. Inlow
Foundation

Carl F. Kiehler
Sara* and Bob LeBien
Marion Bankert Michael and
R. Keith Michael

Dr. Howard Polley
Reva* and Jack Shiner
Mr. and Mrs. Kenneth W. Sparks
Bruce and Shannon Storm - In
Honor of George Pinney
Bruce and Shannon Storm -
In Honor of Tiffany Storm
Ericson

Harlan Lewis and
Doris Wittenburg
Margaret* and William Yarber

Harlan Lewis & Doris
Wittenburg – *Pipeline*
Ruth Albright – *Head Over
Heels*
Carolyn Bailey – *Head Over
Heels*
Katy Bigge Kestner Fund –
Head Over Heels
Connie & Harv Hegarty – *Head
Over Heels*
Cyndi & Dale Nelson – *Head
Over Heels*

BENEFACTOR (\$1,000 and above)

Diana and Rodger Alexander
Teresa and John Ayres
Carolyn Bailey
Anne and Jim Bright
Kathryn and Barry Brown
Julie A. and Cary K. Curry
Carolyn and Dave Emmert
ExxonMobil Foundation
Phil Evans and Herbert
Kuebler
Jacqueline and William Gilkey
James N. and Joyce Grandorf
Stephen C. and Sandra S.
Moberly
Cyndi and Dale Nelson
Schwab Charitable Fund
Paula W. Sunderman
Judy Schroeder

PATRON (\$500 –\$999)

American Online Giving
Foundation
Ruth Albright
Dallas Jewish Community
Foundation
Deborah Burkhart and Earl F.
Luetzelschwab
Eli Lilly & Company
Jacqueline and James Faris
Jo E. and George L. Fielding
Sandra and Don Freund
William A. and Jacqueline
Gilkey
Michael Gleeson
Jo Ellen and Steve Ham
Marlin G. Howard
Kate Kroll
Howard D. Mehlinger

Elizabeth C. Raff
Stanley Ritchie
Idalene Kesner and Paul
Robins
Wendy A. Rubin
Carol and Wade Peacock
Laura C. Trout
Bradley C. Wheeler, Ph.D.

SPONSOR (\$250–\$499)

Samuel R. and Patricia S. Arbery
Katherine and Charles Aiken
Terry Baer
Douglas and Hilary Anderson
Shirley Bernofsky
Cathleen M. Cameron
Ashley and Mark Chilla
Jean Cook
Michael E. Gleeson, Ph.D.
John D. Hobson
Marlin G. Howard
Liam Castellan and Angela
Huxford
Ronald Kovener
Margaret and Donald Jones
Judith Mahy and Richard M.
Shiffrin
Howard D. Mehlinger, Ph.D.
Sherry and Dale McFadden
Maribeth and Richard McKaig
Joanne Passet and Deborah
Wehwman
Katherine and Travis Paulin
George Pinney and Scott Jones
Linda Pisano
Mary F. Popp
Anne T. Fraker and
Richard Rose
Sue Spgambelluri
Phyllis C. Schwitzer
Erdine M. Simic
Alan and Kathryn Somers
Jeffrey and Michelle Stuckey
Barbra Suthers
Young Ae and J. Timothy
Tresslar
Patricia and William Wheeler
Andrea White and Brad
Schiesser
Donna and Richard Wolf

ANNUAL GIVING

July 1, 2023–
July 1, 2024

ASSOCIATE PRODUCERS (\$2,500)

Phil Evans and Herbert O.
Kuebler – *Into the Woods*
Phil Evans and Herbert O.
Kuebler – *Orlando*
Kathryn S & Barry Brown –
Cabaret
Judy Schroeder – *Cabaret*
Anne & Jim Bright – *Cabaret*
William Hegarty – *Cabaret*
The Howard Jensen
Endowment for Classic Theatre
– *Measure For Measure*

* Denotes donors who have passed away, but whose gift continues to benefit the department and its students.

CONTRIBUTOR**(\$100–\$249)**

Bloomington Thrift Shop–
Psi Iota Xi
Joan Marie Capella
Joan H. Caulton and Edwin H.
Greenebaum
Sandra Churchill
Patricia J. and Jeffrey L.
Davidson
Samuel Davis
Rosemary and Richard Dever
Lee Ehman and
Barbara Wilcox
Cheryl A. Engber
David and Tyler Ferguson
Ferguson Law
Shirley A. Fitzgibbons
Lee W. Formwalt and
Richard P. Weichert
Anne T. Fraker and
Richard J. Rose, Ph.D.
Linda F. Gregory
Sandra Hall
Steven L. Hendricks
Darla Brown and Michael Hunt
Bethany Kaszynski
Iris F. Kiesling
Ronald Kovener
Diana Dehart Lehner
Carolyn M. Lipson-Walker and
George L. Walker
Douglas A. and Kay L. Long
James H. and
Jeanne L. Madison
Nancy G. Martin
Tom Mazur
James L. McLay
Virginia Metzger
Gerry Miller
Patricia W. Mulholland
Denise and Harold Ogren
Katherine and Travis Paulin
Carol Pierce
Shirley R. Pugh
Scott and Susan Putney
Lislott and John Richardson
F. Wayne Roberts, Jr.
Donna Snow Robinson
Marilyn F. Saum
Jake Scott
Rob Shakespeare
Marie Shakespeare
Erdine M. Simic
Lynne Perkins and
Matthew Socey
N. J. Stanley, Ph.D.
Barbara J. Suthers

Gerry E. Titus
Scott W. and Teresa M. Turner
Susan and Steven Waggoner
Judy Walcoff
Mary Wennerstrom Phillips
Judy Wertheim

DONOR (up to \$99)

Elaine and Philip Amerson
Ernest Bernhardt-Kabisch
Amy M. Briseño
Carroll Britch
Michael E. Hunt and
Darla S. Brown
Angela D. Huxford and
William K. Castellan
Ruth Chesmore
Susan E. and John I. Cronkhite
John C. Custer
Gresdna Doty
Cheryl A. Engber, Ph.D.
Pam and William Fawcett
Jay Hemphill
Bonnie Brownlee and
Bruce L. Jaffee
Barbara W. and Vern Jorck
Priscilla Osovski and
William A. Manwaring
Marilyn F. Norris
Kathryn A. Oyer
Michael D. Scott
August Semenick
Virginia Semenick
Patricia and Peter Smith
Dr. N.J. Stanley
Gene and Ellen Stern
Kelli and Anthony Zabel

**HONORARY
LIFETIME MEMBERS**

Harv and Connie Hegarty
John Kinzer
Marion Bankert Michael and
R. Keith Michael
Marilyn Norris
Susan Parrish and
Thomas P. Shafer

MEMORIALS

David Albright
Eleanor Auer
J. Jeffery Auer
Roberta Brauner
Richard C. Burke
Ledford and Julia Carter

Nelda Christ
Hattie Clark and Peter Jacobi
Dorothy (Dottie) Collins
Don Cook
Donna Creek
Winona Fletcher
Cyril M. Franks
Violet Franks
Charles and Adele Gallus
Martha and Victor Harnack
Sandra L. Hertling
Frank Hrisomalos
Howard Jensen
Harold Watling Jordan
Lambert and Elizabeth Kiehler
Carolyn Kovener
Sara LeBien
Nita Levison
Jeanette Calkins Marchant
Rosemary Miller
Leonard M. Phillips
Robert L. Shettleroe
Reva Shiner
Coleman Stanley
Fontaine Syer
Grafton Trout
Herman B. Wells
Albert Wertheim
Nathan and Pamela Zauel
Paul N. Zietlow

**THEATRE CIRCLE
BOARD
2023–2024****President**

Dale McFadden

Vice President

Sandy Hall

Secretary

Eric Shelley

Treasurer

Shannon O'Connor Starks

Members

Paul Daily
Pam Davidson
Harlan Lewis
Cyndi Nelson

EX OFFICIO:

Linda Pisano

* Denotes donors who have passed away, but whose gift continues to benefit the department and its students.

SEASON ASSOCIATE PRODUCERS

Diana and Rodger Alexander

Harv and Connie Hegarty

Doris Wittenburg and Harlan Lewis

Phil Evans and Herbert Kuebler

Cyndi and Dale Nelson

SEASON PARTNER LEVEL ASSOCIATE PRODUCERS

Anne and Jim Bright

Kathryn and Barry Brown

Phil Evans and Herbert Kuebler,
partnered with Judy Schroeder

Jo Ellen and Steve Ham

Doris Wittenburg and Harlan Lewis

Town Planner®

YOUR COMMUNITY CALENDAR

*What's happening
around Bloomington?*



Sign up to receive our
weekly e-newsletter!

School Schedules



Community Events



Local Businesses



Valuable Coupons

Browse our local online
events calendar



Printed calendars & coupons mailed to
Bloomington homes every December

TownPlanner.com

Local Bloomington Owners
John & Sharon Martin
jmartin@townplanner.com

One World at

Woolery MILL

with One World Catering



up to 500 guests
free parking
industrial chic
additional amenities

oneworldatwoolery.com

(812) 334-3663

catering@bloomington.com


one
world
Catering



catering for all occasions
available at your venue or Woolery Mill

oneworldcaters.com

(812) 334-3663

catering@bloomington.com



play by
Robert Harling
co-directed by
Cassie Hakken
Aubrey Seader

The hilarious & touching tale of friendship in small town Louisiana in the 1980's.

August 11-13th and 18-20th

At the John Waldron Auditorium

Tickets available at:

Buskirk-Chumley Box Office

For more information:

OFFNIGHTPRODUCTIONS.ORG



Postcards

Delivery or Pick-Up | Free Consultation
Quality Materials | Proofs Available

A cost-effective way to
communicate your story, perfect
for your direct mail projects!

Visit Us Today!
go.iu.edu/Print

Order Here



INDIANA UNIVERSITY
DOCUMENT SERVICES

MOTHER BEAR'S PIZZA



Bloomington, Indiana

812-332-4495

motherbearspizza.com

Special thanks to our 2022-2023 & 2023–2024 season associate producers

The contributions of associate producers directly fund an IU Theatre production of the donor's choice. As an associate producer, you will help directly support the cost of a production's costume, scenic, lighting, sound, and projection design. Your name will be featured in our programs and all curtain speeches. You will also enjoy benefits as year-round members of Theatre Circle, an organization founded to promote and encourage the study and practice of theatre arts in the Department of Theatre, Drama, and Contemporary Dance and an awareness of theatre throughout the community.

For more information, please pick up a Theatre Circle brochure in the lobby or contact Linda Pisano at lpisano@indiana.edu or 812.855.0809.

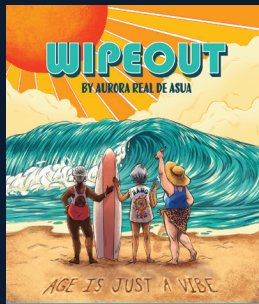
Or, visit the Department of Theatre, Drama, and Contemporary Dance website at theatre.indiana.edu and select the Theatre Circle link.



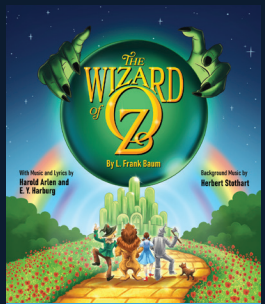


24/25 SEASON

SeeConstellation.org
812.336.9300



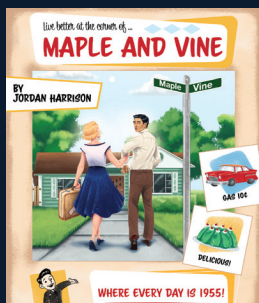
AGE IS JUST A VIBE
SEPT 5 - 29



DEC 12 - 29



JAN 30 - FEB 16



MAR 27 - APR 13



JUN 4 - 29



OCT 25 - NOV 10



APR 25 - MAY 11

Become a Season Ticket Holder to save big!
Single tickets on sale starting July 10



2024/2025 SEASON

Live performance, living impact

Sanctuary City

Sept 27-Oct 5

Reefer Madnaess

Oct 25-Nov 2

Fking A**

Nov 14-22

**Reconstructed/
Reframed**

2024 WINTER DANCE CONCERT

Dec 13-14

At First Sight

13TH ANNUAL NEW WORKS FESTIVAL 2025

Jan 24-Feb 1

Twelfth Night

Feb 14-22

Too Much Light Makes The Baby Go Blind

Mar 6-14

Legally Blonde

April 18-26

Echoes

2025 SENIOR CAPSTONE PROJECTS

May 2-3

**2024/25
SEASON**
theatre.indiana.edu

BUILD YOUR OWN
SEASON

STARTING AT

\$88 ADULT

\$52 STUDENT



visit theatre.indiana.edu or call (812) 855-1103



MOTHER BEAR'S PIZZA



*Enjoy the show...
later, enjoy the pizza!*

EAST: 1428 E. Third Street • 812 332-4495
WEST: 2980 Whitehall Crossing • 812 287-7366